



MODELLING AND SIMULATION
OF ELECTRIC MACHINES,
CONVERTERS AND SYSTEMS

6th INTERNATIONAL CONFERENCE

ELECTRIMACS 99

ORGANISED BY THE TECHNICAL
COMMITTEE N° 1 OF IMACS
(FORMERLY IMACS - TCI CONFERENCE)

SEPTEMBER 14 - 15 - 16 • 1999

INSTITUTO SUPERIOR TÉCNICO,
LISBOA, PORTUGAL

PROCEEDINGS • VOL. 2/3

DRIVING MECHANICAL ROBOTS THROUGH LINEAR ACTUATORS

Alexandra M.S.F. Galhano, J.A. Tenreiro Machado

Institute of Engineering of the Polytechnic Institute of Porto
 Dept. of Electrical Engineering, Rua de S. Tomé, 4200 Porto, Portugal
 Fax: +351-2-821159; e-mail: {afg, jtm}@dee.isep.ipp.pt

Abstract: Present day mechanical manipulators have poor performances when compared with the human arm. In fact, joint-driven manipulators are not efficient due to the high actuator requirements imposed by the transients of the operational tasks. Muscle-actuated arms are superior because the anatomic levers adapt the manipulating exigencies to the driving linear actuators. The kinematic analysis of these systems highlights its main properties and constitutes a step towards the design of new mechanical biological-like robotic structures adopting linear actuators replacing the standard rotational joint-driving motor systems.

1.- INTRODUCTION

The low performances of robotic manipulators, when compared with the human arm, motivated the development of new mechanical structures. Research in this area lead to the development of mathematical and computer models of the kinematic and dynamic phenomena [1–7]. Nevertheless, clear guidelines towards the implementation of optimal manipulating structures are still lacking. Joint-driven manipulators, with standard actuators, are not well adapted to the transients imposed by the robotic applications [8–9]. Alternative structures having muscle-like actuators and appropriate mechanical levers [10–15], may allow more efficient manipulating structures.

This paper investigates the arm biomechanics and evaluates its influence upon the driving actuators. In this perspective the article is organized as follows. Section two formulates a geometrical model of the human arm and section three analyzes the performances of muscle-actuated manipulators. Motivated by the results, section four studies the development and control of linear actuators. Finally, section five outlines the main conclusions.

2.- A GEOMETRIC MODEL OF THE HUMAN ARM

Extensive studies [16–25] have been carried out on the analysis of the human arm, still there are not definite conclusions. Therefore, in order to simplify matters, only the arm motion in the sagittal plane is considered (Figs. 1 to 3).

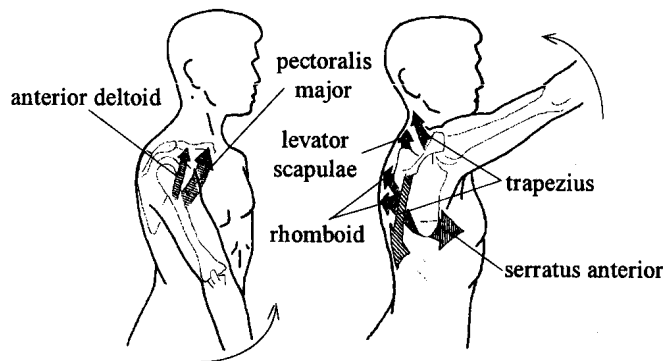


Fig. 1: Shoulder joint during the flexion in the sagittal plane.

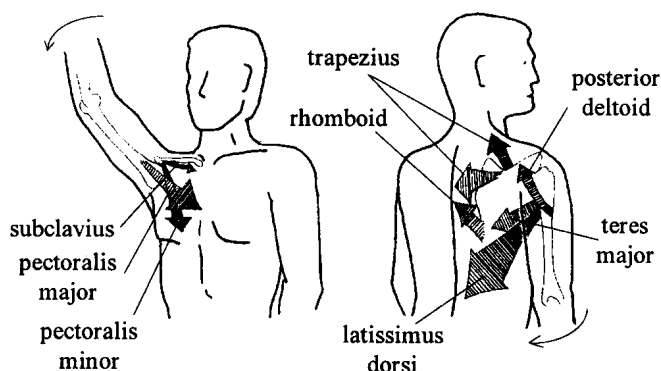


Fig. 2: Shoulder joint during the extension in the sagittal plane.

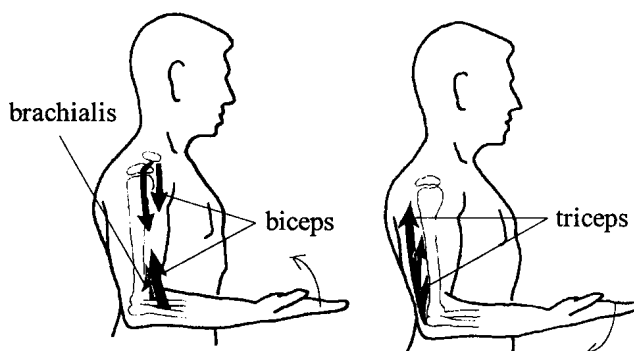


Fig. 3: Elbow joint during the flexion and extension in the sagittal plane.

• For $-\pi/18 \leq q_1 \leq 4\pi/9$ the anterior deltoid is acting freely (*i.e.* is not wound around the pulley) leading to:

$$z_{11} = \sqrt{d^2 + h^2 - 2dhC_{01}} \quad (4a)$$

$$\dot{z}_{11} = (dhS_{01}/z_{11})\dot{q}_{01} \quad (4b)$$

$$\ddot{z}_{11} = \frac{dh}{z_{11}} \left[\left(\frac{z_{11}^2 C_{01} - dhS_{01}^2}{z_{11}^2} \right) \dot{q}_{01}^2 + S_{01} \ddot{q}_{01} \right] \quad (4c)$$

For the extension we have a single case where the posterior deltoid is wound around the pulley through the total range of motion $-2\pi/3 \leq q_1 \leq 4\pi/9$:

$$z_{12} = h \left[2\pi - q_{02} - \text{sen}^{-1} \left(\sqrt{d^2 - h^2} / d \right) \right] + \sqrt{d^2 - h^2} \quad (5a)$$

$$\dot{z}_{12} = -h\dot{q}_{02} \quad (5b)$$

$$\ddot{z}_{12} = -h\ddot{q}_{02} \quad (5c)$$

For the elbow articulation acting in the sagittal plane ($0 \leq q_2 \leq \pi$), we can also derive the expressions for the displacements, velocities and accelerations (z_{2i} , \dot{z}_{2i} , \ddot{z}_{2i}) for the biceps brachii and triceps brachii ($i = 1, 2$), yielding:

$$z_{2i} = \sqrt{l_1^2 + b_i^2 + 2l_1 b_i C_2} \quad (6a)$$

$$\dot{z}_{2i} = -(l_1 b_i S_2 / z_{2i}) \dot{q}_2 \quad (6b)$$

$$\ddot{z}_{2i} = -\frac{l_1 b_i}{z_{2i}} \left\{ C_2 + l_1 b_i \left(\frac{S_2}{z_{2i}} \right)^2 \dot{q}_2^2 + S_2 \ddot{q}_2 \right\} \quad (6c)$$

where b_i is a parameter.

Comparing the equations (1) to (6) we conclude that the elbow muscle velocities (6b) compensate the factor S_2^{-1} , present in the conventional inverse kinematics (1b) of joint-actuated systems, that degrades the robot performances near singular points.

3.- KINEMATIC PERFORMANCE OF MUSCLE-ACTUATED ARMS

In this section we analyze the kinematics performances of muscle-actuated arms. We must note that we are not modeling the muscle properties but, in fact, we are proceeding in the opposite way. By other words, we describe the task requirements and the manipulator structure and we study its effect on the actuators. In this perspective, we assume that natural evolution should lead to muscles having properties well matched to the requirements.

In the experiments we “stimulate” the system through simple trajectories in the operational space and we compare the actuator kinematic variables for the joint-driven and muscle-driven robotics structures. In order to test the biomechanical model we decided to move the arm according with two different linear trajectories in the operational space:

$$s_1 : (p_{1a}, p_{2a}) \equiv (0.01, 0) \rightarrow (p_{1b}, p_{2b}) \equiv (0.01, 0.30)$$

$$s_2 : (p_{1a}, p_{2a}) \equiv (0.30, 0) \rightarrow (p_{1b}, p_{2b}) \equiv (0.30, 0.30)$$

where (p_{1a}, p_{2a}) and (p_{1b}, p_{2b}) are the coordinates of the initial and final trajectory points, respectively.

Trajectory s_1 starts near the singular point (0,0) while s_2 is less demanding because is far away from singularities. Moreover, the trajectories have identical time evolution:

$$s_i : (p_{1a}, p_{2a}) \rightarrow (p_{1b}, p_{2b}) \quad (7a)$$

$$s(t) = \frac{D}{T} \left[t - \frac{T}{2\pi} \text{sen} \left(\frac{2\pi}{T} t \right) \right] \quad (7b)$$

$$D = \sqrt{(p_{1a} - p_{1b})^2 + (p_{2a} - p_{2b})^2} \quad (7c)$$

where T is the time duration of the movement.

Figure 5 compares the time evolution of $\{q_i(t), \dot{q}_i(t), \ddot{q}_i(t)\}$ and $\{z_{i1}(t), \dot{z}_{i1}(t), \ddot{z}_{i1}(t)\}$ for s_1 and s_2 and $T = 1 \text{ sec}$. As expected, the results reveal that:

- The joint velocities and accelerations, $\dot{q}_i(t), \ddot{q}_i(t)$, ($i = 1, 2$), attain higher levels for s_1 than for s_2 .
- The displacements of the shoulder and elbow muscles, $z_{11}(t)$ and $z_{21}(t)$, are very limited for both trajectories, being amplified by the anatomic levers in order to produce the displacement in the operational space.
- The velocity of the elbow muscle, $\dot{z}_{21}(t)$, is not sensitive to the singularity near s_1 and gives similar values for s_2 .
- The velocity of the shoulder muscle, $\dot{z}_{11}(t)$, is sensitive to the change from s_1 to s_2 .
- The accelerations of the shoulder and elbow muscles, $\ddot{z}_{11}(t)$ and $\ddot{z}_{21}(t)$, are sensitive to the type of trajectory.

In conclusion, joint actuators, which are developments of standard driving machines that are designed for steady-state applications, are not well adapted to robotic applications. Manipulators must have transmission levers that adapt the operational space tasks to the muscle actuator requirements.

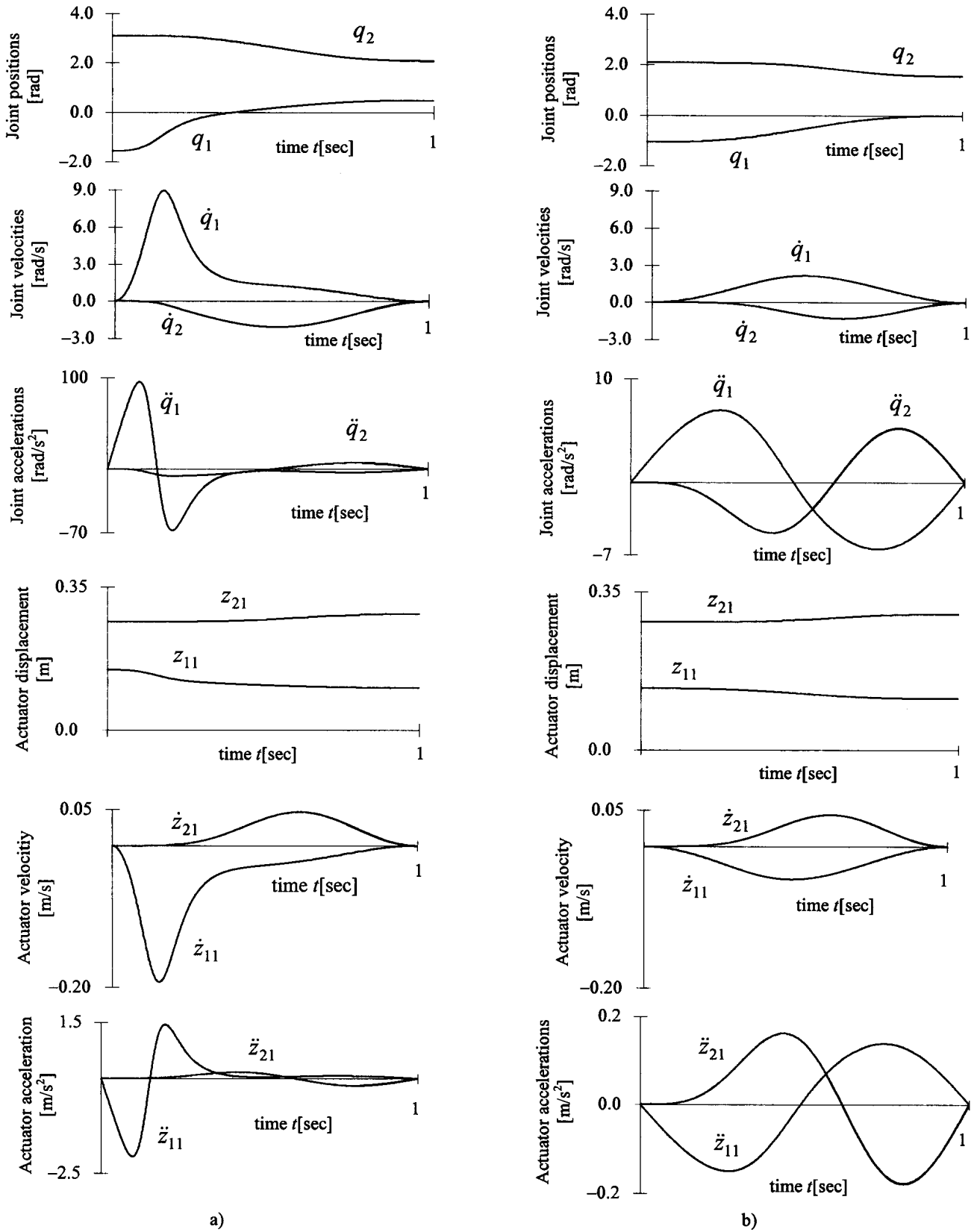


Fig. 5: Time evolution of positions, velocities and accelerations at the joints and muscles for trajectories:
 a) $s_1 : (p_{1a} p_{2a}) \equiv (0.01, 0) \rightarrow (p_{1b} p_{2b}) \equiv (0.01, 0.30)$, b) $s_2 : (p_{1a} p_{2a}) \equiv (0.30, 0) \rightarrow (p_{1b} p_{2b}) \equiv (0.30, 0.30)$
 $l_1 = 0.3 \text{ m}$, $l_2 = 0.3 \text{ m}$, $d = 0.126 \text{ m}$, $h = 0.043 \text{ m}$, $b_1 = 0.034 \text{ m}$, $b_2 = -0.02 \text{ m}$, $T = 1 \text{ sec}$.

4.- LINEAR ACTUATORS FOR ROBOT MANIPULATORS

Muscle-driven manipulators require the development of appropriate linear actuators. Such actuators must provide high forces and high accelerations while driving small displacements. Moreover, in order to simplify the interface with the control system, an electrical actuator will be preferable. In this line of thought, a servo-solenoid is an electromagnetic equivalent of a muscle cell, and it can be modeled through the equations:

$$v = Ri + L \dot{i} + K_b \dot{x} \quad (7a)$$

$$f = K_f A \left(\frac{Ni}{x} \right)^2 \quad (7b)$$

Here R and L represent the resistance and inductance of the coil, N the number of turns, A and x are the area and length of the air gap in the magnetic circuit. The electrical voltage and current are v and i , the force exerted of the moving part of the solenoid is f and K_b and K_f are constants of proportionality.

As solenoids represent a mimic of muscles they can be associated in u series and in w parallels leading to the expressions for the total force F_{Total} and displacement x_{Total} :

$$F_{Total} = \sum_{i=1}^w \text{Min}_j(F_{ij}) \quad (8a)$$

$$x_{Total} = \sum_{j=1}^u \text{Min}_i(x_{ij}) \quad (8b)$$

Such associations allow the minimization of the actuator moving inertia and the allocation of different "cells" to distinct operating conditions (e.g. transient *versus* steady-state) in a hierarchical control system (Fig. 6).

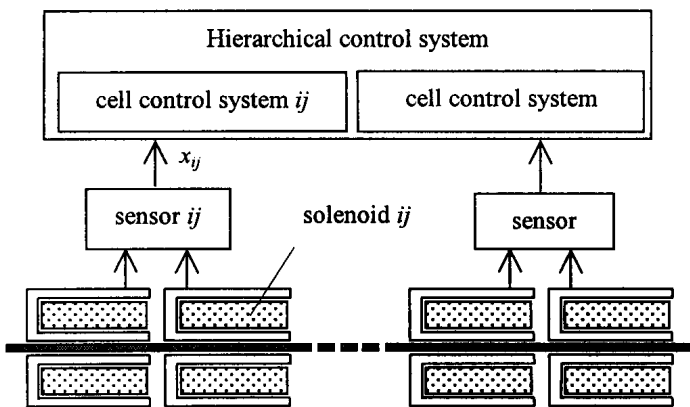


Fig. 6: Actuator hierarchical control system

In this perspective, the development of a linear electromagnetic actuator is currently under development (Fig. 7).

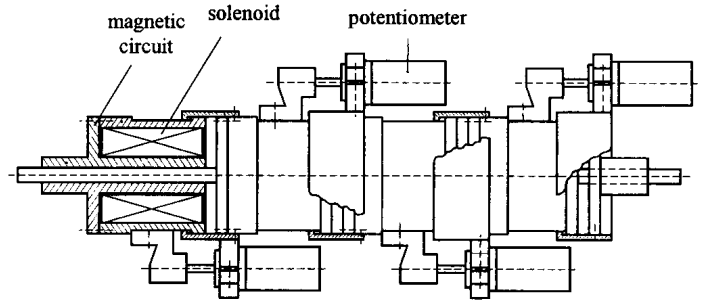


Fig. 7: Solenoid series for robotic application. Each "cell" has: $R = 23.83 \Omega$, $L = 1.88 \text{ mH}$, $A = 19.35 \cdot 10^{-4} \text{ m}^2$, Weight = 0.55 Kg.

In what concerns each "cell" control system it should be noted that equation (7b) poses stringent requirements due to the fact that:

- There is a negative dynamic characteristic that leads to an intrinsic unstable system;
- There is a high sensitivity of the actuator force f to variations of the air gap length x .

Figure 8 shows the block diagram of the solenoid control system for a load f_L with inertia J and friction B .

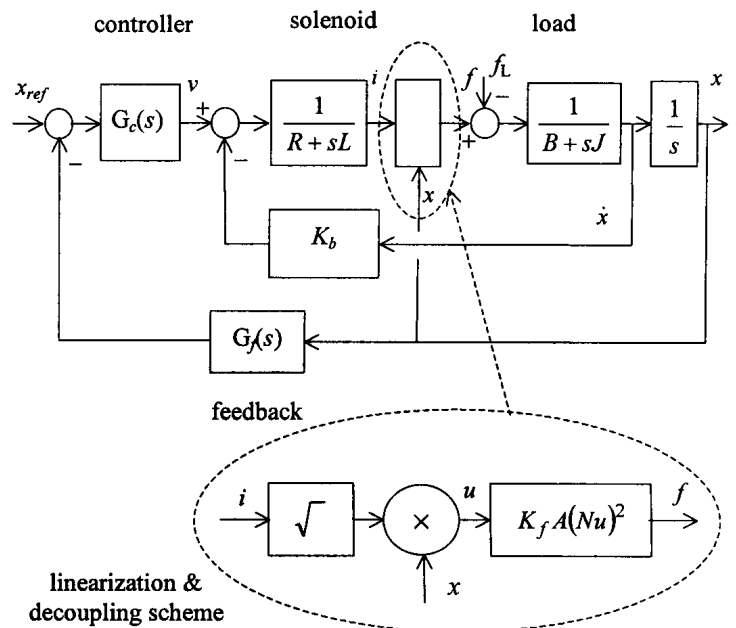


Fig. 8: Block diagram of the solenoid control system for a load f_L with inertia J and friction B .

Due to the complex dynamics revealed by equation (7b) the adoption of a decoupling and linearizing scheme leads to a closed-loop transfer function:

$$\frac{X(s)}{X_{ref}(s)} = \frac{K_i G_c(s)}{s[(R+sL)(B+Js) + K_i K_b] + K_i G_c(s) G_f(s)} \quad (9a)$$

$$\frac{X(s)}{F_L(s)} = \frac{R+sL}{s[(R+sL)(B+Js) + K_i K_b] + K_i G_c(s) G_f(s)} \quad (9b)$$

where $K_i = K_f A N^2$ and $G_c(s)$ and $G_f(s)$ are the transfer functions of the controller and feedback, respectively. Based on this model we can design the cell controller using standard linear system tools.

5. CONCLUSIONS

The paper presented the analysis of mechanical manipulators in the sagittal plane. Motivated by the kinesiological aspects of the human arm we demonstrate that biomechanical structures have better performances than standard robot manipulators. In fact, joint-actuated robotic structures are non-optimal because they have to support the direct impact of the operational requirements, while muscle-actuated arms are superior because they have anatomic levers and actuators more adapted to the transients required by the operational tasks. Therefore, these results are a step towards the design of a new generation of better manipulators structures and a new generation of linear muscle-like, low displacement high acceleration, actuators. In this perspective, it is proposed the adoption of solenoids as electromagnetic actuators that provide high forces and small displacements. Its dynamic characteristics are nonlinear and present challenging aspects in what concerns the control system that is presently under study.

References

- [1] Tsai, Y. C., Soni, A. H.: Accessible region and synthesis of robot arms, ASME J. Mechanical Design, vol. 103, 1981, pp. 803–811.
- [2] Asada, H.: A Geometrical representation of manipulator dynamics and its application to arm design, ASME J. Dynamic Syst., Meas., Contr., vol. 105, 1983, pp. 131–142.
- [3] Asada, H., Youcef-Toumi, K.: Analysis and design of a direct-drive arm with a five-bar-link parallel mechanism, ASME J. Dynamic Syst., Meas., Contr., vol. 106, 1984, pp. 225–230.
- [4] Yoshikawa, T.: Manipulability of robotic mechanisms, The Int. J. Robotics Research, vol. 4, 1985, pp. 3–9.
- [5] Yoshikawa, T.: Analysis and design of articulated robot arms from the viewpoint of dynamic manipulability, Robotics Research, Proc. the Third Int. Symp., 1986, pp. 273–279.
- [6] Yang, D.C.H., Tzeng, S.W.: Simplification and linearization of manipulator dynamics by the design of inertia distribution, The Int. J. Robotics Research, vol. 5, 1986, pp. 120–128.
- [7] Youcef-Toumi, K., Asada, H.: The design of open-loop manipulator arms with decoupled and configuration-invariant

inertia tensors, ASME J. Dynamic Syst., Meas., Contr., vol. 109, 1987, pp. 268–275.

[8] Galhano, A.F., Machado, J.T., Carvalho, J.M.: On the statistical modelling of mechanical manipulators, Proc. IFAC Symp. on Robot Control, 1991, pp. 15–20, Vienna, Austria.

[9] Machado, J. T., Galhano, A.F.: Statistical modelling of robotic manipulators, Journal Systems Analysis-Modelling-Simulation, vol. 12, 1993, pp. 101–123.

[10] An, K. N., Hui, F. C., Morrey, B. F., Linscheid, R. L., Chao, and E. Y.: Muscles across the elbow joint: a biomechanical analysis, J. of Biomechanics, vol. 14, 1981, pp. 659–669.

[11] Atkeson, C. G., Hollerbach, J. M.: Kinematic features of unrestrained vertical arm movements, J. Neuroscience, vol. 5, n. 9, 1985, pp. 2319–2330.

[12] Rossi, D., Domenici, C., Chiarelli P.: Analogs of biological tissues for mechano-electrical transduction: tactile sensors and muscle-like actuators, Proc. NATO ARW on Sensors and Sensory Systems for Advanced Robots, 1986, Italy.

[13] Kuribayashi, K.: A new actuator of a joint mechanism using TiNi alloy wire, The Int. J. Robotics Research, vol. 4, 1986, pp. 47–58.

[14] Tataru, Y.: Mechanochemical actuators, Advanced Robotics, vol. 2, 1987, pp. 69–85.

[15] Caldwell, D. G., Taylor, P. M.: Artificial muscles as robotic actuators, Proc. IFAC Symp. on Robot Control, 1988, pp. 40.1–40.6, Karlsruhe, Germany.

[16] Kawato, M.: Adaptation and learning in control of voluntary movement by the central nervous system, Advanced Robotics, vol. 3, n. 3, 1989, pp. 229–249.

[17] Kinzel, G. L.: Reduction of instrumental linkage data for simple anatomical joint models, ASME J. Mechanical Design, vol. 104, 1982, pp. 218–226.

[18] Kendall, H.O., Kendall, F.P., Wadsworth, G.E., 1971, Muscles - Testing and function, The Williams & Wilkins Company, Baltimore, USA.

[19] Wells, K. F., Lutgens, K., 1976, Kinesiology - Scientific basis of human motion, W. B. Saunders Company.

[20] Rasch, P. J., Burke, R. K., 1976, Kinesiology and applied anatomy - The science of human movement, Lea & Febiger, Philadelphia, USA.

[21] Fischer, L.P., Carret, J.P., Gonon, G.P., Dimmet, J.: Étude cinématique des mouvements de l'articulation scapulo-humérale (articulatio humeri), Rev. Chir. Orthop., vol. 63, 1977, pp. 108–112.

[22] Ito, N., Suzuki, R., Ishimura, K., Kuwahara, H.: Electromyographic study of shoulder joint, Proc. 4th Congress of I.S.E.K., 1979, pp. 22–23, Boston, USA.

[23] Kapandji, I., 1983, Physiologie articulaire - Schémas commentés de mécanique humaine - Tome 1, Membre supérieur, Maloine S. A., France.

[24] Hogan, N.: Adaptive Control of Mechanical impedance by coactivation of the antagonist muscles, IEEE Trans. Automat. Contr., vol. 29, n. 8, 1984, pp. 681–690.

[25] Akazawa, K., Fujii, K.: Theory of muscle contraction and motor control, Advanced Robotics, vol. 1, 1986, pp. 379–390.

[26] Galhano, A.F., Machado, J. T., Carvalho, J.M.: On the analysis of muscle-actuated manipulators, Proc. Fifth Int. Conf. on Advanced Robotics, 1991, pp. 67–71, Pisa, Italy.

[27] Galhano, A.F., Machado, J. T., Carvalho, J.M.: Statistical analysis of muscle-actuated manipulators, Proc. IEEE Int. Conf. on Robotics and Automation, 1992, pp. 332–337, Nice, France.