

The carboxylic acid transporters Jen1 and Jen2 affect the architecture and fluconazole susceptibility of *Candida albicans* biofilm in the presence of lactate

Rosana Alves^a, Sandra Mota^{a,b}, Sónia Silva^c, Célia F. Rodrigues^c, Alistair J. P. Brown^d, Mariana Henriques^c, Margarida Casal^a and Sandra Paiva^a

^aCentre of Molecular and Environmental Biology, Department of Biology, University of Minho, Braga, Portugal; ^bCentre of Health and Environmental Research, School of Allied Health Sciences, Polytechnic Institute of Porto, Porto, Portugal; ^cCentre of Biological Engineering, LIBRO-Laboratório de Investigação em Biofilmes Rosário Oliveira, University of Minho, Braga, Portugal; ^dMRC Centre for Medical Mycology, Aberdeen Fungal Group, Institute of Medical Sciences, University of Aberdeen, Aberdeen, UK

ABSTRACT

Candida albicans has the ability to adapt to different host niches, often glucose-limited but rich in alternative carbon sources. In these glucose-poor microenvironments, this pathogen expresses *JEN1* and *JEN2* genes, encoding carboxylate transporters, which are important in the early stages of infection. This work investigated how host microenvironments, in particular acidic containing lactic acid, affect *C. albicans* biofilm formation and antifungal drug resistance. Multiple components of the extracellular matrix were also analysed, including their impact on antifungal drug resistance, and the involvement of both Jen1 and Jen2 in this process. The results show that growth on lactate affects biofilm formation, morphology and susceptibility to fluconazole and that both Jen1 and Jen2 might play a role in these processes. These results support the view that the adaptation of *Candida* cells to the carbon source present in the host niches affects their pathogenicity.

Introduction

The human fungal pathogen *Candida albicans* is the main etiological agent of candidiasis and one of the most frequent causes of hospital-acquired infections (Pfaller and Diekema 2007; Pappas et al. 2009). This opportunistic fungus is commonly found as a commensal in the human microbial flora of healthy people. However, in individuals with a weakened immune system, it can overgrow and cause serious or fatal infections. The pathogenicity of *C. albicans* and the high mortality rates associated with these infections are, in part, due to the ability to form biofilms and, consequently, resist the common classes of antifungals (Ramage et al. 2006, 2009). Nevertheless, some fitness attributes, such as the flexibility to utilize a wide range of nutrients, also play an important role in virulence (Brown et al. 2014; Miramón and Lorenz 2017).

Inside the human host, *C. albicans* faces different pH environments, from acidic to mildly basic, and the ability to adjust to these fluctuations is essential for its pathogenicity (De Bernardis et al. 1998; Davis 2009; Vylkova et al. 2011; Vylkova and Lorenz 2014). In some glucose-poor niches, such as in the colon and in the vagina, this fungus

has also to adapt to changes in the availability of carbon sources, assimilating alternative nutrients, such as lactate or acetate (Staib et al. 1999; Barelle et al. 2006; Ene et al. 2013; Brown et al. 2014). This adaptation requires a metabolic switch (Lorenz and Fink 2001; Lorenz et al. 2004; Vieira et al. 2010; Ene et al. 2013), as verified, for instance, upon phagocytosis (Miramón et al. 2012). Microarray data of *C. albicans* cells internalized by macrophages showed the upregulation of *JEN1* (Lorenz et al. 2004), encoding a lactate permease (Soares-Silva et al. 2004), and its close homolog *JEN2*, encoding a malate and a succinate permease (Vieira et al. 2010). Both Jen1-GFP and Jen2-GFP were expressed in macrophages and neutrophils, which are rich in alternative carbon sources, but not in the bloodstream where glucose is abundant (Vieira et al. 2010). These results suggest that lactate in the phagosome might help to sustain *C. albicans* following phagocytosis.

In addition to the phagosome, lactate is present in ingested foods and in the human body. It is produced at high rates by red blood cells, brain, and muscle, it is present in the urogenital tract and represents almost 2% of all carbon metabolites originating from the gut microbiota (Flint et al. 2012). This carbon source is also a component

of the lactated Ringer's solutions, Hartmann's solutions, commonly used intravenously after trauma, surgery or burn injury and whose usage increases the risk of systemic candidiasis and the formation of biofilms in catheters (Pfaller and Diekema 2010), representing a severe problem in modern medicine (Donelli and Vuotto 2014). Growth of *C. albicans* on physiologically relevant concentrations of lactate affects stress adaptation, antifungal drug resistance, the architecture and proteome of the cell wall, immune detection and, in consequence, the virulence of this fungus (Ene et al. 2012, 2013; Ballou et al. 2016). Lactate-grown cells of *C. albicans* are more resistant to amphotericin B and caspofungin, but more sensitive to miconazole (Ene et al. 2012). They also exhibit distinct compositions in the cell wall proteome and secretome in comparison with glucose-grown cells (Ene et al. 2012). These changes lead to a stronger adherence to plastic surfaces and an increase in biofilm formation on both silicone and plastic surfaces in minimal medium, a condition that generally does not promote the yeast-hyphae transition or classical biofilm formation (Ene et al. 2012).

In this work, host microenvironments, in particular acidic niches that contain lactic acid, were studied regarding their effect on *C. albicans* biofilm formation and susceptibility to the most commonly used antifungal, fluconazole. Little is known about the effect of alternative carbon sources in *C. albicans* biofilm formation and development as the majority of studies are performed using glucose, as sole carbon source. Here, *C. albicans* cells were grown in RPMI medium containing different substrates, such as glucose and lactate, and then they were characterized with respect to their ability to form biofilms and resist fluconazole. Multiple components of the extracellular matrix were also analysed, including their impact on drug resistance, and the involvement of both carboxylic acid transporters, Jen1 and Jen2, on these processes. By clarifying the effect of local nutrients on biofilm formation and antifungal resistance in *C. albicans*, new and effective treatment strategies can be developed for both mucosal and systemic infections.

Material and methods

Yeast strains and growth conditions

Experiments were performed with *C. albicans* RM1000 (*ura3::imm434/ura3::imm434, his1::hisG/his1::hisG*) (Negredo et al. 1997) and the double *jen1jen2* mutant (*ura3::imm434/ura3::imm434 his1::hisG/his1::hisG jen1::HIS1/jen1::ura3-, jen2::ura3-/jen2::URA3*) (Vieira et al. 2010). *C. albicans* RM1000 (isogenic to the SC5314 strain) was routinely cultured on YPD (1% yeast extract, 1% peptone, 2% glucose and 2% agar) plates stored at room

temperature. The *C. albicans jen1jen2* mutant strain was maintained on YNB (yeast nitrogen base 0.67% w v⁻¹) agar plates supplemented with the appropriate requirements for prototrophic growth. Cells were inoculated in YPD broth and incubated for 16–18 h at 37°C under agitation. After incubation, the cells were harvested by centrifugation at 3,000 g for 10 min at 4°C and washed twice with phosphate buffered saline (PBS). Pellets were then suspended in PBS and the cellular density adjusted to 1 × 10⁵ cells ml⁻¹ using a Neubauer counting chamber. Biofilm growth was performed using Roswell Park Memorial Institute (RPMI) 1640 medium (Sigma, St Louis, MO, USA) with or without lactic acid (0.5%, v v⁻¹). The pH for the RPMI medium was always set either to 5 with HCl or to 7 with NaOH.

Minimal inhibitory concentration

The minimal inhibitory concentration (MIC) assays were performed according to the Clinical and Laboratory Standards Institute M27-A3 document (CLSI 2008) with some modifications, using RPMI 1640 broth supplemented with 0.165 M of MOPS at pH7 and with or without adding 0.5% lactic acid at pH5. Different concentrations of fluconazole were used, ranging from 0 to 1,250 µg ml⁻¹ (Mota et al. 2015). Briefly, a colony of the strain grown in YPD solid medium was resuspended in 5 ml of saline solution (NaCl 0.85%, w v⁻¹) until a cellular density equivalent to 0.5 McFarland standard. The yeast suspensions were diluted (1:100) in saline solution and diluted again (1:20) in RPMI 1640. This suspension in RPMI 1640 was added to the respective well of microtitre plates containing the specific concentration of fluconazole solutions. Controls without antifungal agents were also performed. The microtitre plates were incubated at 37°C for 48 h under aerobic conditions. The MICs of the antifungal agent against each *Candida* strain were determined visually and by total number of colony forming units (CFUs). For this purpose, cells corresponding to each condition were serially diluted in PBS and 10 µl of each one were plated in YPD. Experiments were performed in triplicate, using three independent biological samples.

Biofilm formation

Biofilm formation was performed as described by Mota et al. (2015). Briefly, 200 µl of 1 × 10⁵ cells ml⁻¹ suspensions in the required medium were placed into 96-well polystyrene microtitre plates (Orange Scientific, Braine-l'Alleud, Belgium) and incubated at 37°C under aerobic conditions with gentle agitation. At 24 h, the entire volume of medium was removed and 200 µl of fresh medium were added to each well. In order to study the effect of fluconazole on biofilm formation, different concentrations (50,

150, 312.5 and 1,250 $\mu\text{g ml}^{-1}$) were prepared in RPMI 1640 medium and added to the 24 h formed biofilm. The microtitre plates were then incubated for an additional 24 h, totalling 48 h of biofilm growth.

Biofilm biomass quantification

After biofilm formation for 48 h, the entire volume of medium was aspirated and non-adherent cells removed by washing once with PBS. Biofilm forming ability was assessed through quantification of the total biomass by crystal violet (CV) staining (Stepanovic et al. 2000). Thus, after washing, biofilms were fixed with 200 μl of methanol, which were removed after contact for 15 min. The microtitre plates were allowed to dry at room temperature, and 200 μl of CV (1%, $v v^{-1}$) were added to each well and incubated for 5 min. The wells were then gently washed twice with water and 200 μl of acetic acid (33%, $v v^{-1}$) were added to release and dissolve the stain. The absorbance of the solution obtained was read in a microtitre plate reader (Bio-Tek Synergy HT, Izasa, Portugal) at 570 nm. The results were presented as absorbance per unit area, Abs (570 nm) cm^{-2} . Experiments were performed in triplicate, using three independent biological samples.

Biofilm viability quantification

The number of cultivable cells in biofilms was determined by the enumeration of CFUs. For that, after biofilm growth for 48 h and the PBS washing step described previously, the biofilms were scraped from wells in to 200 μl PBS and the suspensions were vigorously vortexed to disaggregate cells from the matrix (Silva et al. 2009). Serial 10-fold dilutions in PBS were plated onto YPD plates and incubated for 24 h at 37°C. Complete removal of the biofilm was confirmed by subsequent CV staining and spectrophotometric reading for inspection of the wells. The results were presented as the total of CFUs per unit area (\log_{10} CFU cm^{-2}). Experiments were performed in duplicate, using three independent biological samples.

Biofilm structure analysis

Biofilm structure was assessed by scanning electron microscopy (SEM). Biofilms were formed in 24-well polystyrene microtitre plates (Orange Scientific) with 1 ml of 1×10^5 cells ml^{-1} suspensions, as described previously. After 48 h incubation the biofilms formed were washed with PBS, dehydrated with alcohol (using 70% ethanol for 10 min, 90% ethanol for 10 min and 100% ethanol for 20 min) and air-dried. Prior to observation, the base of the wells was mounted onto aluminium stubs, sputter coated with a thin film (15 nm) of Au-Pd (80–20 wt %)

and observed with an ultra-high resolution Field Emission Gun Scanning Electron Microscopy (FEG-SEM; Nova NanoSem 200, FEI Company, OR, USA).

Biofilm matrix extraction

Biofilms were formed in a 24-well polystyrene microtitre plate (Orange Scientific), for each condition, as described previously. After 48 h, the formed biofilm was washed with PBS, scraped from the wells and resuspended in 5 ml of PBS. The extracted matrices were sonicated (Ultrasonic Processor, Cole-Parmer, IL, USA) for 30 s at 30% amplitude and vortexed for 30 s. One ml of the suspension was used for dry biofilm weight determination and the rest was centrifuged at 5,000 rpm for 5 min at 4°C. The supernatant was filtered through a 0.45 μm nitrocellulose filter and stored at -20°C until further analysis. The experiments were performed in triplicate, using two independent biological samples.

Protein determination in the biofilm matrix

The protein quantification was measured using the BCA Protein Assay Kit (Thermo Scientific, Waltham, MA, USA), using bovine serum albumin as standard and following the manufacturer's instructions. Briefly, 25 μl of each sample were mixed with 200 μl of BCA Working Reagent. After incubation for 30 min at 37°C, the absorbance of the solution obtained was read in a microtitre plate reader (Bio-Tek Synergy HT, Izasa, Portugal) at 562 nm, using PBS as a blank. The values were normalized per g of dry weight of biofilm and presented as mg of protein per g of dry weight of biofilm (mg g^{-1} biofilm).

Carbohydrate determination in the biofilm matrix

Carbohydrate quantification was assessed by the phenol-sulphuric acid method (DuBois et al. 1956), using glucose as standard. Briefly, 500 μl of each sample were mixed with 500 μl of phenol (50 g l^{-1}) and 2,500 μl of sulphuric acid (95–95%). After incubation for 15 min at room temperature, all polysaccharides and their derivatives were stained orange-yellow and the absorbance of the solution obtained read in a microtitre plate reader (Bio-Tek Synergy HT, Izasa, Portugal) at 490 nm, using PBS as a blank. The values were normalized per g of dry weight of biofilm and presented as mg of carbohydrate per g of dry weight of biofilm (mg g^{-1} biofilm).

β -1,3 Glucan determination in the biofilm matrix The matrix β -1,3-glucan content was determined using the GlucateLL (1,3)-Beta-D-Glucan Detection Reagent Kit

(Associates of Cape Cod, East Falmouth, MA, USA), as per the manufacturer's directions. Briefly, 50 µl of each sample were mixed with 50 µl of GlucateLL reagent. After incubation for 40 min at 37°C, the reaction was stopped by adding sequentially 50 µl of sodium nitrite, 50 µl of ammonium sulphamate and then 50 µl of N-(1-naphthyl) ethylenediamine dihydrochloride (NEDA). All solutions and glucan standards were supplied with the kit. The solution obtained was read in a microtitre plate reader (Bio-Tek Synergy HT, Izasa, Portugal) at 540 nm, using PBS as a blank. The values were normalized per g of dry weight of biofilm and presented as ng of β-1,3-glucans per g of dry weight of biofilm (ng g⁻¹ biofilm).

Ergosterol extraction and quantification

For the ergosterol extraction, 2 ml of n-hexan (Thermo Scientific, Waltham, MA, USA) were added to 10 ml of the matrix suspension prepared as previously described. This preparation was then submitted to vortex for 1 min. This procedure was performed three times and the top solution sequestered to a 10 ml amber bottle. After the extraction, the solutions were dried with nitrogen until all the organic solvent has evaporated. The dried extract was resuspended in 2 ml of methanol, filtered with a 0.45 µm filter into an Eppendorf tube and stored at -20°C (Marín et al. 2006). For the ergosterol quantification, the high-pressure liquid chromatography (HPLC) method was performed in a Varian STAR 9002 (Varian, Walnut Creek, CA, USA) using a C18 column (YMC, Allentown, PA, USA). An isocratic mobile phase of 100% of methanol with a flow of 1 ml min⁻¹, for 20 min, was used for the quantification of each sample. The results were automatically shown by the HPLC detector (Marín et al. 2006), and then normalized by g of dry weight biofilm and presented as µg of ergosterol per g of dry weight of biofilm (µg g⁻¹ biofilm).

Statistical analysis

Data were analysed using Graph Pad Prism (v.7). Statistical significance was determined by one-way or two-way ANOVA with Tukey's multiple comparison post-test. All tests were performed with a confidence level of 95%.

Results

Characterization of *C. albicans* biofilms in the presence of lactic acid

Lactic acid, naturally present in several sites in the human body, can be used as an alternative carbon source by *Candida* cells. To determine the influence of lactic acid on the formation and behaviour of *C. albicans* biofilms *in vitro*,

they were characterized using *C. albicans* RM1000 (wild type) cells in RPMI-containing 0.5% lactic acid medium at pH5, a condition where most of the acid is present in its anionic form and its assimilation depends on a transporter-mediated system (Casal et al. 2008). In order to mimic different host microenvironments, and given that glucose is the preferential carbon source for *C. albicans*, assays using RPMI medium containing glucose, and no lactic acid, at both pH7 and pH5 were also carried out. Biofilms were analysed by total biomass quantification through CV staining and the enumeration of cultivable cells (CFUs) (Figure 1A and C). Both quantifications were carried out on biofilms grown for 48 h. The ultrastructure of biofilms was assessed by SEM analysis (Figure 1B and D).

The results obtained indicate that *C. albicans* WT cells displayed enhanced biofilm formation in the presence of lactate when compared to biofilms formed in the presence of glucose ($p < 0.001$; Figure 1A). It was also observed that, depending on pH and the carbon source, biofilms formed in the presence of lactate developed different structures and the cells exhibited different morphological characteristics. Mature biofilms grown in the presence of glucose at pH7 (RPMI pH7) consisted of a dense network of hyphae without yeast forms, while at pH5 (RPMI pH5) a reduction in filaments was evident (Figure 1B). In the presence of lactic acid (RPMI 0.5% lactic acid pH5) most of the cells were in the yeast form (Figure 1B). Both WT and mutant strains displayed an identical growth profile, exhibiting more biofilm biomass in the presence of lactic acid than in glucose ($p < 0.001$; Figure 1A and C). Regarding ultrastructural and morphological features, the *jen1jen2* double mutant mainly formed hyphae in the presence of glucose; while in the presence of lactic acid the yeast form was the most predominant with almost no filamentous forms observed (Figure 1D). The mutant strain also exhibited a compact biofilm structure with some cracks and less hyphae than the WT (Figure 1B and D).

Lactic acid increases the susceptibility of *C. albicans* planktonic cells to fluconazole

In an attempt to further explore the role of Jen1 and Jen2 in *C. albicans* resistance to fluconazole, the minimal fungicidal concentration (MFC) and the MIC by CFU counting for WT and *jen1jen2* planktonic cells grown either in lactic acid or glucose was determined (Table 1).

In RPMI medium, independently of the pH, no differences in MIC values were observed between the tested strains, which displayed equal growth behaviour up to the highest concentration of fluconazole (Table 1). In the presence of lactic acid, a MIC value of 150 µg ml⁻¹ and a MFC value of 312.5 µg ml⁻¹ were obtained for the WT strain, and lower fluconazole MIC and MFC values (50

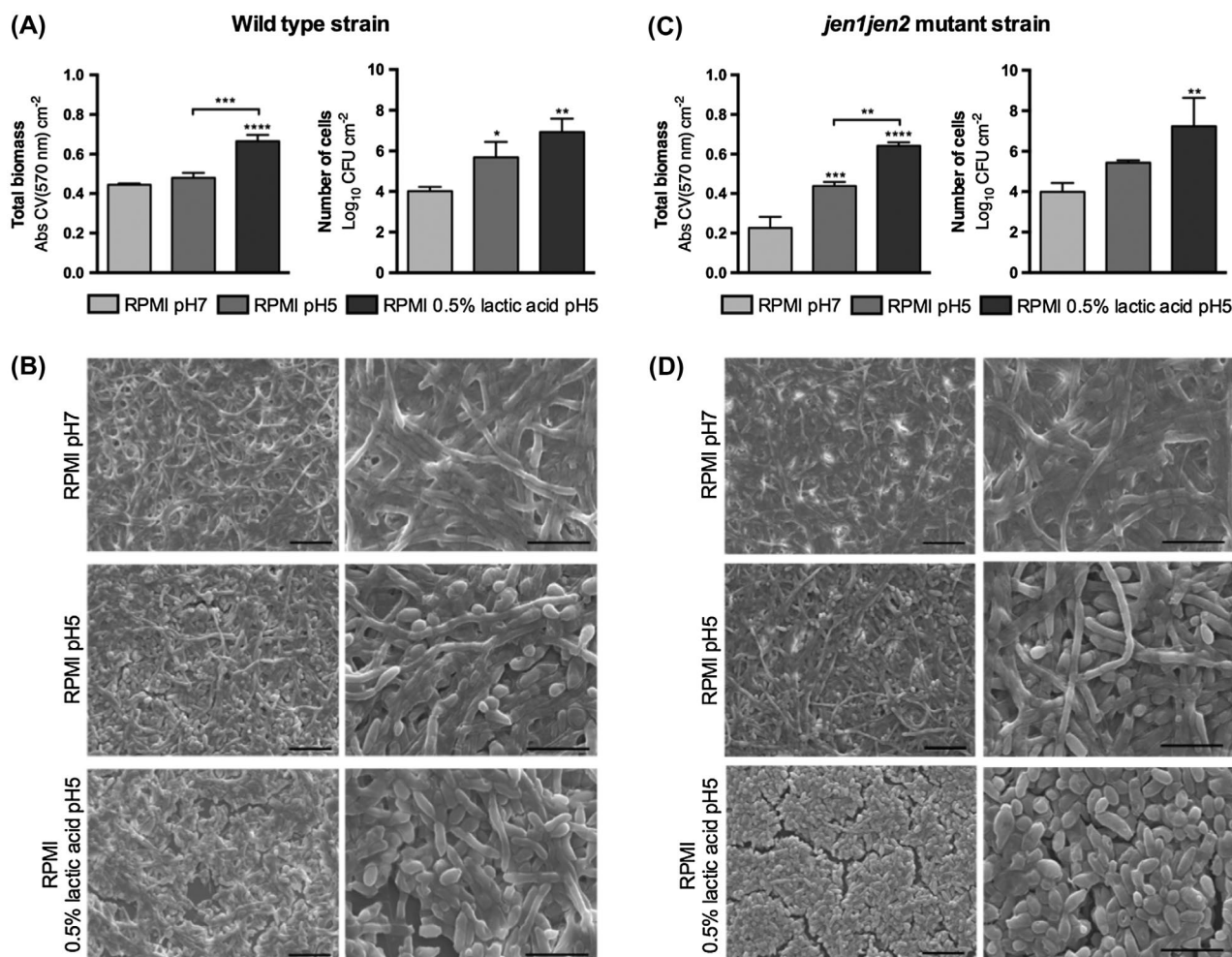


Figure 1. Effect of lactic acid on *C. albicans* biofilms (wild type strain vs the *jen1jen2* mutant strain). (A, C) Total biomass of biofilms and number of cells in biofilms formed after 48 h in different conditions: RPMI pH7, RPMI pH5 and RPMI 0.5% lactic acid pH5. The absorbance value of CV solution (Abs CV) at 570 nm and the logarithm of colony forming units (CFU) were normalized by unit of area (Abs CV_{570 nm} cm⁻² and Log₁₀ CFU cm⁻², respectively). Error bars represent SDs. Statistically significant changes appear above error bars when compared with the control group (RPMI pH7) or above brackets when compared with the second control group (RPMI pH5); **($p < 0.01$), ***($p < 0.001$). (B, D) SEM images of mature biofilms. The left and the right images in each panel represent magnifications of 1,000 × and 3,000 ×, respectively. Bars on the images correspond to 20 μm at 1,000 × magnification and 10 μm at 3,000 × magnification.

Table 1. Effect of fluconazole on *C. albicans* WT and *jen1jen2* planktonic cells using different growth conditions: cells grown in RPMI pH7, RPMI pH5 and RPMI 0.5% lactic acid pH5.

Strain	Condition	MIC (μg ml ⁻¹)	MFC (μg ml ⁻¹)
WT	RPMI pH7	≥1,250	>1,250
	RPMI pH5	625	1,250
	RPMI 0.5% lactic acid pH5	150	312.5
<i>jen1jen2</i>	RPMI pH7	≥1,250	>1,250
	RPMI pH5	625	1,250
	RPMI 0.5% lactic acid pH5	50	150

Note: MICs were determined visually and MFCs by total number of CFUs, according to the microdilution method (CLSI 2008).

and 150 μg ml⁻¹, respectively) were found for the mutant strain (Table 1). Therefore, with the addition of fluconazole, all strains became more susceptible in the presence of lactic acid and the double mutant was even more

susceptible than the WT. These results suggest that Jen1 and Jen2 play a role in antifungal resistance to fluconazole.

Characterization of fluconazole antifungal activity in *C. albicans* biofilms

The effect of fluconazole was also evaluated for biofilms (Figure 2), similar to what was done for planktonic cells.

Figure 2A shows that in RPMI medium at pH7, the presence of fluconazole did not significantly affect the amount of total biomass. Interestingly, at pH5 and in the presence of lactic acid, the reduction was significant for both strains. While in RPMI lactic acid *jen1jen2* planktonic cells were more susceptible to fluconazole compared to the WT strain (Table 1), their biofilm counterparts did not follow the same behaviour. In general, a significant

Table 2. Effect of fluconazole on ergosterol production in the biofilm matrices of *C. albicans* WT and the mutant strain *jen1jen2*.

Strain	Condition	Fluconazole ($\mu\text{g ml}^{-1}$)	Ergosterol ($\mu\text{g g}^{-1}$ biofilm)
WT	RPMI pH7	0	≤ 14.360
		312.5	≤ 256.000
		1,250	≤ 33.750
	RPMI pH5	0	≤ 17.724
		312.5	≤ 27.442
		1,250	≤ 9.333
	RPMI 0.5% lactic acid pH5	0	≤ 80.350
		312.5	≤ 105.560
		1,250	≤ 131.200
<i>jen1jen2</i>	RPMI pH7	0	≤ 30.000
		312.5	≤ 128.570
		1,250	≤ 23.680
	RPMI pH5	0	≤ 31.163
		312.5	≤ 11.224
		1,250	≤ 9.063
	RPMI 0.5% lactic acid pH5	0	≤ 60.000
		312.5	≤ 68.870
		1,250	≤ 0.220

Note: The table displays the highest concentrations detected in μg per g of 48 h biofilm dry weight ($\mu\text{g g}^{-1}$ biofilm).

reduction in cell viability was only observed at the highest tested concentration of fluconazole (Figure 2A). The effect of fluconazole on biofilm structure was also assessed by SEM analysis (Figure 2B). In RPMI medium, the differences were only visible with 1,250 $\mu\text{g ml}^{-1}$ of fluconazole for both strains and conditions. In the case of RPMI lactic acid, significant differences were observed between both strains in the presence and in the absence of fluconazole (Figure 2B). The absence of an antifungal resulted in a dense, compact biofilm with almost no hyphal forms in the mutant strain, in contrast to a hyphae containing biofilm structure in the WT strain. Interestingly, the highest fluconazole concentration led to an increase in hyphae formation both for WT and mutant strains (Figure 2B).

Impact of carbon sources and fluconazole treatment on the biofilm matrix of *C. albicans*

The matrix of *Candida* has a prominent role in the antifungal drug resistance associated with biofilms (Branda et al. 2005; Zarnowski et al. 2014). The biofilm matrix composition of both strains was analysed in response to changes in carbon sources and antifungal treatment. Several components were evaluated that have been involved in the sequestration of antifungals, such as polysaccharides (Figure 3A), the extracellular carbohydrate β -1,3-glucan (Figure 3B), proteins (Figure 3C) and ergosterol (Table 2).

The content of polysaccharides increased in the presence of fluconazole, particularly in the highest concentration, in all tested conditions (Figure 3A). However, in RPMI pH5 medium this increase was lower in both strains. A significant decrease in polysaccharides in the *jen1jen2* mutant strain was observed, when compared with

the WT, in the presence of lactate and high concentrations of fluconazole (Figure 3A). This result suggests that there may be a greater requirement for Jen1/2-mediated lactate uptake, in these stress conditions.

Inversely, the amount of β -1,3-glucans found in the biofilm matrices did not follow the same pattern in the growth conditions tested, in response to antifungal treatment (Figure 3B). The total protein content, in contrast to what was observed for the polysaccharides, decreased in the presence of fluconazole, in both strains (Figure 3C).

In general, the concentration of ergosterol in the matrices increased with the addition of fluconazole up to 312.5 $\mu\text{g ml}^{-1}$ (Table 2). However, the addition of 1,250 $\mu\text{g ml}^{-1}$ of fluconazole inverted this tendency, with the exception of matrices extracted from WT biofilms, grown in the presence of lactic acid. As observed for the polysaccharides, the *jen1jen2* mutant strain displayed a lower amount of ergosterol when compared with WT, in the presence of lactate and 1,250 $\mu\text{g ml}^{-1}$ of fluconazole.

Discussion

Candida biofilms can occur on most biological and non-biologic substrata, such as catheters, serving as reservoirs or sources for potential infections (Donlan and Costerton 2002; Douglas 2003; Ramage et al. 2009). Most studies of *Candida* species, including *Candida* biofilms, have been carried out using glucose as the sole carbon source in the medium. However, the concentration of glucose in some host niches is usually limited and *Candida* depends on alternative substrates for growth and invasion. The physiology of *Candida* is profoundly affected by carbon sources so it is crucial to accurately reflect this variable in experiments in order to understand biofilm formation in these niches. Some studies have shown that lactate-grown cells, in minimal medium, adhere more strongly to plastic surfaces and display increased biofilm formation (Ene et al. 2012, 2013). However, the growth conditions used in this study did not promote yeast hyphae transitions and classical biofilm formation (Ene et al. 2012). In this context, *C. albicans* biofilm formation was studied in media containing both glucose and lactate at different pH values, conditions that mimic host microenvironments where this pathogen can be found.

The presence of lactic acid promoted biofilm formation (Figure 1A). Regarding morphology, *C. albicans* biofilms can comprise yeast cells, hyphae and pseudohyphae (Ramage et al. 2005). It is well established that *C. albicans* changes its morphology according to environmental conditions, which constitutes one of its virulence factors (Calderone and Fonzi 2001). Nutrient starvation, the presence of serum, an increase in temperature and pH have been reported as hypha-inducing environmental

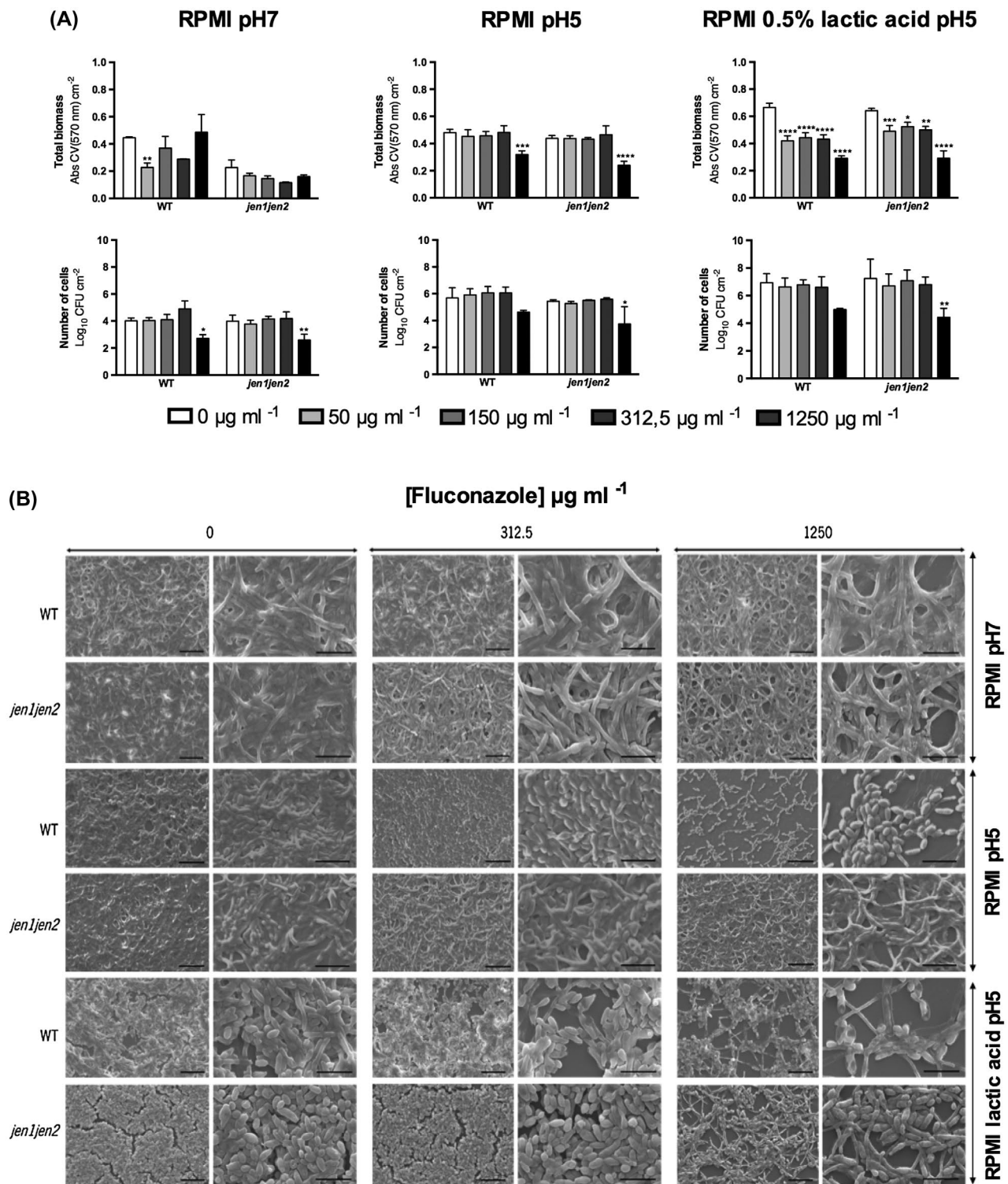


Figure 2. Effect of fluconazole on *C. albicans* WT and *jen1jen2* biofilms grown in RPMI pH7, RPMI pH5 and RPMI 0.5% lactic acid pH5. (A) Histograms at the top represent the absorbance values of CV solution at 570 nm normalized by unit of area (Abs CV_{570 nm} cm⁻²) and histograms at the bottom represent the logarithm of CFUs normalized by unit of area (Log₁₀ CFU cm⁻²) of biofilm. The legend displays the different fluconazole concentrations used. Error bars represent SDs. *, **, *** and **** mean that results are statistically significant ($p < 0.05$, $p < 0.01$, $p < 0.001$ and $p < 0.0001$, respectively). (B) SEM images showing the effect of fluconazole on both WT and *jen1jen2* biofilms. The left and the right image in each strain for the respective fluconazole concentration represents a magnification of 1,000 × and 3,000 ×, respectively. Bars in the images correspond to 20 μm at 1,000 × magnification and 10 μm at 3,000 × magnification.

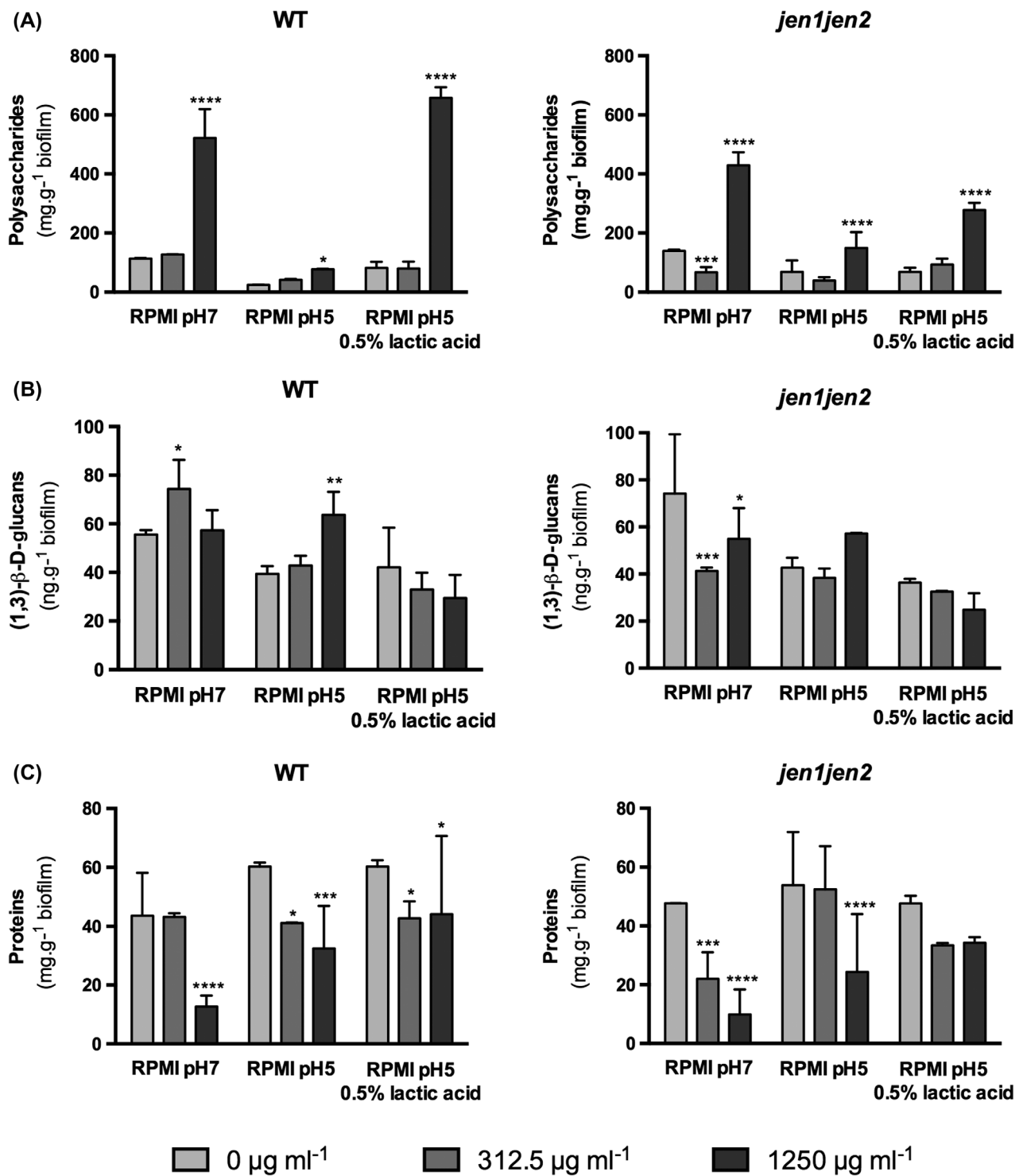


Figure 3. Effect of fluconazole on the biofilm matrix composition of *C. albicans* WT and *jen1jen2* strains grown in RPMI pH7, RPMI pH5 and RPMI 0.5% lactic acid pH5. Concentrations are presented in mg for (A) polysaccharides and (C) proteins or ng for (B) 1,3-β-D-glucans per g of 48 h biofilm dry weight (mg g⁻¹ biofilm or ng g⁻¹ biofilm, respectively). Error bars represent SDs. *, **, *** and **** mean that the results are statistically significant ($p < 0.05$, $p < 0.01$, $p < 0.001$ and $p < 0.0001$, respectively).

factors (Whiteway and Bachewich 2007). As expected, the present study shows that in RPMI pH7 the hyphal morphology predominated, whereas in RPMI pH5 the yeast form was the most prevalent (Figure 1B). However,

in the presence of lactate (RPMI 0.5% lactic acid pH5) the yeast form was even more predominant and minimal hyphal formation was observed (Figure 1B). In addition to pH, the carbon source available is also important in *C.*

albicans morphology and ultimately in *C. albicans* biofilm formation.

Regarding the contribution of the carboxylic acid transporters Jen1 and Jen2, the disruption of *JEN1* and *JEN2* compromises biofilm formation in RPMI containing lactate. These results indicate that the *jen1jen2* mutant is capable of forming biofilm in all the tested conditions and its behaviour is similar to that of WT, as both strains have more biofilm biomass in the presence of lactic acid (Figure 1A and C). Regarding ultrastructure, the *jen1jen2* mutant presented a compact biofilm structure with some cracks and even less hyphae than the WT in lactate containing media (Figure 1D). These differences, observed in the presence of lactate, point to an involvement of these transporters in biofilm formation, at least in terms of ultrastructure.

Biofilm cells display unique phenotypic characteristics, the most remarkable of which is that they are particularly resistant to both antifungal agents and host immune factors (Douglas 2003; Ramage et al. 2009). Attempts were also made to elucidate the role of Jen1 and Jen2 in *C. albicans* resistance to the commonly used antifungal drug fluconazole. In a *jen1jen2* double mutant strain, carboxylic acids only enter the cell by simple diffusion of the undissociated form of the acid, a process dependent on extracellular pH. These studies were conducted both in planktonic and biofilm cells. The results indicate that lactate-grown planktonic cells of the mutant strain were more susceptible to fluconazole than the WT cells (Table 1), pointing to an involvement of these transporters in antifungal drug resistance. Additionally, the presence of lactic acid in the medium acts synergistically with fluconazole, since WT cells became more susceptible to fluconazole under this condition. These results are in agreement with previous studies, that showed an increase in *C. albicans* susceptibility to miconazole, another azole antifungal drug, in lactic acid-grown cells (Ene et al. 2012), and to fluconazole in a synthetic vagina-simulative medium in an acidic pH (Moosa et al. 2004). The analysis of the components of the medium indicated that acetic acid was responsible for the synergistic, fungicidal effect and not lactic acid (Moosa et al. 2004). Here, the results indicate that lactic acid also triggers this effect and maybe, in this niche, both acids can contribute equally to this phenomenon. These findings support the results from Ene et al. (2012) with the demonstration of growth inhibition by a clinically important azole, reinforcing the idea that lactate reduces azole resistance. Regarding biofilms, fluconazole had almost no effect on biofilm reduction (Table 1). While in the presence of lactic acid *jen1jen2* planktonic cells were more susceptible to fluconazole compared to WT cells, their biofilm counterparts did not follow the same behaviour. In general, a significant reduction in cell

viability was only observed at the highest tested concentration of fluconazole (Table 2). However, these results should be interpreted carefully since in planktonic cells, according to the standard method used (CLSI 2008), the antifungal drug is added at the beginning of the assay, and in biofilms the drug is added after 24 h. These different procedures, inherent in biofilm growth assays, may be responsible for the observed phenotypes. It was reported that the addition of fluconazole at the initiation of biofilm formation inhibited this process even in *C. albicans* strains known to be resistant to fluconazole (Bruzual et al. 2007). Nevertheless, these results are in accordance with what has been reported in other studies that demonstrated that biofilms need about 100 to 1,000 times more of an antifungal drug to be eradicated (Baillie and Douglas 1998; Chandra et al. 2001; Ramage et al. 2001). An interesting phenotype was observed as a result of fluconazole treatment in the RPMI medium containing lactic acid. In this condition both strains showed increased hyphae formation (Figure 2B), an important feature of this fungus in pathogenesis. According to previous studies, hypha formation in planktonic cells of *C. albicans* is inhibited in the presence of fluconazole or other azole derivatives (Odds and Kerridge 1985; Ha and White 1999). However, in the case of biofilms, the cells are immersed in an extracellular matrix that provides better protection against stress factors.

Antifungal resistance in biofilms is complex. It can be inducible in response to a drug, or an irreversible genetic change resulting from a prolonged exposure. The mechanisms utilized by fungi to combat the effects of antifungal drugs comprise modifications or overexpression of target molecules, active extrusion through efflux pumps, limited diffusion, tolerance, and cell density (Donlan and Costerton 2002; Kumamoto 2002; Tobudic et al. 2012). Recent studies suggest that the composition of the extracellular matrix and its regulation might play a central role in resistance, with the polysaccharide β -1,3-glucan being linked to biofilm protection against antifungal agents (Nett et al. 2007b, 2010; Taff et al. 2012). Besides conferring significant resistance to antifungal therapy, the composition of the extracellular matrix also contributes to defence from the host immune response and maintenance of nutrients (Cuellar-Cruz et al. 2012). The matrix contains polysaccharides, small amounts of proteins, DNA and can also have several other components (Douglas 2003; Nett and Andes 2006; Martins et al. 2010; Cuellar-Cruz et al. 2012). The results of this study strengthen the role of polysaccharides in antifungal drug resistance. The increase in this component upon fluconazole treatment could reflect a cell mechanism for survival under the presence of the drug. This reinforces the resistance model which suggests that the polysaccharides present in the extracellular matrix that covers biofilm cells are

capable of sequestering antifungal drugs, acting as a 'drug sponge'. This has the ability to prevent invading cells from reaching their targets, thus limiting their toxicity to these cells and associated transcriptional responses (Nett et al. 2007a, 2010; Taff et al. 2012). Additionally, these results also show that in the presence of lactic acid and at high concentrations of fluconazole, the production of general polysaccharides is affected in a *jen1jen2* mutant strain (Figure 3A). This suggests that Jen1/2-mediated lactate uptake or Jen1/2-mediated signalling is required in these conditions. However, the amount of β -1,3-glucans found in the biofilm matrices was almost constant in all conditions (Figure 3B), suggesting that these molecules only represent a small portion of the total matrix polysaccharides (Zarnowski et al. 2014). In contrast with the polysaccharides, the matrices from all strains and conditions exhibited a decrease in the protein content with the antifungal treatment (Figure 3C), suggesting a possible compensatory mechanism in the matrix content. Another mechanism of resistance is the overexpression of target molecules. It has been reported that the exposure of biofilms to fluconazole results in overexpression of the genes encoding the enzymes involved in ergosterol biosynthesis (Nailis et al. 2010). An increase in ergosterol in the extracellular matrix was observed with fluconazole treatment (up to 312.5 $\mu\text{g ml}^{-1}$) and a decrease in the presence of the highest concentration of the drug (Table 2). This may be due to differential regulation of ergosterol genes associated with antifungal treatment.

In summary, this work indicates that the alternative carbon source lactic acid affects the structure and morphology of *C. albicans* biofilms and has an impact on antifungal resistance to fluconazole in both planktonic and biofilm cells. It also suggests that the carboxylic acid transporters Jen1 and Jen2 might play a role in these processes during growth in host microenvironments containing lactate. These findings have an important clinical impact, namely in the treatment of vaginal candidiasis, a host niche with an acidic pH, rich in alternative carbon sources, such as lactate.

Funding

This study was funded by the Portuguese Foundation for Science and Technology (FCT) [grant number PTDC/BIAM-

IC/5184/2014]. SM, CFR and RA received FCT PhD studentships [grant numbers SFRH/BD/74790/2010, SFRH/BD/93078/2013, PD/BD/113813/2015, respectively]. The work on CBMA was supported by FCT [grant number UID/BIA/04050/2013] and COMPETE 2020 [grant number POCI-01-0145-FEDER-007569]. The work on CEB was supported by FCT [grant number UID/BIO/04469/2013], COMPETE 2020 [grant number POCI-01-0145-FEDER-006684] and BioTecNorte operation [grant number NORTE-01-0145-FEDER-000004] funded by the ERDF under the scope of Norte2020 – Programa Operacional Regional do Norte. AJPB was funded by the UK Medical Research Council [grant number MR/M026663/1]; by the UK Biotechnology and Biological Research Council [grant number BB/K017365/1]; and by the MRC Centre for Medical Mycology and the University of Aberdeen [grant number MR/M026663/1]. The funders had no role in study design, data collection and analysis, the decision to publish, or in the preparation of the manuscript.

References

- Baillie GS, Douglas LJ. 1998. Iron-limited biofilms of *Candida albicans* and their susceptibility to amphotericin B. *Antimicrob Agents Chemother.* 42:2146–2149.
- Ballou ER, Avelar GM, Childers DS, Mackie J, Bain JM, Wagener J, Kastora SL, Panea MD, Hardison SE, Walker LA, et al. 2016. Lactate signalling regulates fungal β -glucan masking and immune evasion. *Nat Microbiol.* 2:16238.
- Barelle CJ, Priest CL, MacCallum DM, Gow NAR, Odds FC, Brown AJP. 2006. Niche-specific regulation of central metabolic pathways in a fungal pathogen. *Cell Microbiol.* 8:961–971.
- Branda SS, Vik Å, Friedman L, Kolter R. 2005. Biofilms: the matrix revisited. *Trends Microbiol.* 13:20–26.
- Brown AJP, Brown GD, Netea MG, Gow NAR. 2014. Metabolism impacts upon *Candida* immunogenicity and pathogenicity at multiple levels. *Trends Microbiol.* 22:614–622.
- Bruzual I, Riggle P, Hadley S, Kumamoto CA. 2007. Biofilm formation by fluconazole-resistant *Candida albicans* strains is inhibited by fluconazole. *J Antimicrob Chemother.* 59:441–450.
- Calderone R, Fonzi W. 2001. Virulence factors of *Candida albicans*. *Trends Microbiol.* 9:327–335.
- Casal M, Paiva S, Queirós O, Soares-Silva I. 2008. Transport of carboxylic acids in yeasts. *FEMS Microbiol Rev.* 32:974–994.
- Chandra J, Kuhn DM, Mukherjee PK, Hoyer LL, McCormick T, Ghannoum MA. 2001. Biofilm formation by the fungal pathogen *Candida albicans*: development, architecture, and drug resistance. *J Bacteriol.* 183:5385–5394.
- CLSI. 2008. Clinical and Laboratory Standards Institute: reference method for broth dilution antifungal susceptibility testing of yeasts; approved standard-; CLSI document M27-A3.
- Cuellar-Cruz M, Lopez-Romero E, Villagomez-Castro JC, Ruiz-Baca E. 2012. *Candida* species: new insights into biofilm formation. *Future Microbiol.* 7:755–771.
- Davis DA. 2009. How human pathogenic fungi sense and adapt to pH: the link to virulence. *Curr Opin Microbiol.* 12:365–370.
- De Bernardis F, Mühlischlegel FA, Cassone A, Fonzi WA. 1998. The pH of the host niche controls gene expression in and virulence of *Candida albicans*. *Infect Immun.* 66:3317–3325.

- Donelli G, Vuotto C. 2014. Biofilm-based infections in long-term care facilities. *Future Microbiol.* 9:175–188.
- Donlan RM, Costerton JW. 2002. Biofilms: survival mechanisms of clinically relevant microorganisms. *Clin Microbiol Rev.* 15:167–193.
- Douglas LJ. 2003. *Candida* biofilms and their role in infection. *Trends Microbiol.* 11:30–36.
- DuBois M, Gilles KA, Hamilton JK, Rebers PA, Smith F. 1956. Colorimetric method for determination of sugars and related substances. *Anal Chem.* 28:350–356.
- Ene IV, Adya AK, Wehmeier S, Brand AC, MacCallum DM, Gow NAR, Brown AJP. 2012. Host carbon sources modulate cell wall architecture, drug resistance and virulence in a fungal pathogen. *Cell Microbiol.* 14:1319–1335.
- Ene IV, Cheng SC, Netea MG, Brown AJP. 2013. Growth of *Candida albicans* cells on the physiologically relevant carbon source lactate affects their recognition and phagocytosis by immune cells. *Infect Immun.* 81:238–248.
- Flint HJ, Scott KP, Louis P, Duncan SH. 2012. The role of the gut microbiota in nutrition and health. *Nat Rev Gastroenterol Hepatol.* 9:577–589.
- Ha KC, White TC. 1999. Effects of azole antifungal drugs on the transition from yeast cells to hyphae in susceptible and resistant isolates of the pathogenic yeast *Candida albicans*. *Antimicrob Agents Chemother.* 43:763–768.
- Kumamoto CA. 2002. *Candida* biofilms. *Curr Opin Microbiol.* 5:608–611.
- Lorenz MC, Bender JA, Fink GR. 2004. Transcriptional response of *Candida albicans* upon internalization by macrophages. *Eukaryot Cell.* 3:1076–1087.
- Lorenz MC, Fink GR. 2001. The glyoxylate cycle is required for fungal virulence. *Nature.* 412:83–86.
- Marín S, Morales H, Ramos AJ, Sanchis V. 2006. Evaluation of growth quantification methods for modelling the growth of *Penicillium expansum* in an apple-based medium. *J Sci Food Agric.* 86:1468–1474.
- Martins M, Uppuluri P, Thomas DP, Cleary IA, Henriques M, Lopez-Ribot JL, Oliveira R. 2010. Presence of extracellular DNA in the *Candida albicans* biofilm matrix and its contribution to biofilms. *Mycopathologia.* 169:323–331.
- Miramón P, Dunker C, Windecker H, Bohovych IM, Brown AJP, Kurzai O, Hube B. 2012. Cellular responses of *Candida albicans* to phagocytosis and the extracellular activities of neutrophils are critical to counteract carbohydrate starvation, oxidative and nitrosative stress. *PLOS ONE.* 7.
- Miramón P, Lorenz MC. 2017. A feast for *Candida*: metabolic plasticity confers an edge for virulence. *PLoS Pathog.* 13.
- Moosa MYS, Sobel JD, Elhailis H, Du W, Akins RA. 2004. Fungicidal activity of fluconazole against *Candida albicans* in a synthetic vagina-simulative medium. *Antimicrob Agents Chemother.* 48:161–167.
- Mota S, Alves R, Carneiro C, Silva S, Brown AJ, Istel F, Kuchler K, Sampaio P, Casal M, Henriques M, Paiva S. 2015. *Candida glabrata* susceptibility to antifungals and phagocytosis is modulated by acetate. *Front Microbiol.* 6.
- Nailis H, Vandenbosch D, Deforce D, Nelis HJ, Coenye T. 2010. Transcriptional response to fluconazole and amphotericin B in *Candida albicans* biofilms. *Res Microbiol.* 161:284–292.
- Negredo A, Monteoliva L, Gil C, Pla J, Nombela C. 1997. Cloning, analysis and one-step disruption of the ARG5,6 gene of *Candida albicans*. *Microbiology.* 143:297–302.
- Nett J, Andes D. 2006. *Candida albicans* biofilm development, modeling a host–pathogen interaction. *Curr Opin Microbiol.* 9:340–345.
- Nett J, Lincoln L, Marchillo K, Andes D. 2007a. β -1,3 Glucan as a test for central venous catheter biofilm infection. *J Infect Dis.* 195:1705–1712.
- Nett J, Lincoln L, Marchillo K, Massey R, Holoyda K, Hoff B, VanHandel M, Andes D. 2007b. Putative role of β -1,3 glucans in *Candida albicans* biofilm resistance. *Antimicrob Agents Chemother.* 51:510–520.
- Nett JE, Sanchez H, Cain MT, Andes DR. 2010. Genetic basis of candida biofilm resistance due to drug-sequestering matrix glucan. *J Infect Dis.* 202:171–175.
- Odds FC, Kerridge D. 1985. Morphogenesis in *Candida albicans*. *CRC Crit Rev Microbiol.* 12:45–93.
- Pappas PG, Kauffman CA, Andes D, Benjamin DK Jr, Calandra TF, Edwards JE Jr, Filler SG, Fisher JF, Kullberg B, Ostrosky-Zeichner L, et al. 2009. Clinical practice guidelines for the management of Candidiasis: 2009 update by the infectious diseases society of America. *Clin Infect Dis [Internet].* 48:503–535.
- Pfaller MA, Diekema DJ. 2007. Epidemiology of invasive Candidiasis: a persistent public health problem. *Clin Microbiol Rev.* 20:133–163.
- Pfaller MA, Diekema DJ. 2010. Epidemiology of invasive mycoses in North America. *Crit Rev Microbiol.* 36:1–53.
- Ramage G, Martínez JP, López-Ribot JL. 2006. *Candida* biofilms on implanted biomaterials: a clinically significant problem. *FEMS Yeast Res.* 6:979–986.
- Ramage G, Mowat E, Jones B, Williams C, Lopez-Ribot J. 2009. Our current understanding of fungal biofilms. *Crit Rev Microbiol.* 35:340–355.
- Ramage G, Saville SP, Thomas DP, López-Ribot JL. 2005. *Candida* biofilms: an update. *Eukaryot Cell.* 4:633–638.
- Ramage G, Vandewalle K, Wickes BL, López-Ribot JL. 2001. Characteristics of biofilm formation by *Candida albicans*. *Rev Iberoam Micol organo la Asoc Esp Espec en Micol.* 18:163–170.
- Silva S, Henriques M, Martins A, Oliveira R, Williams D, Azeredo J. 2009. Biofilms of non-*Candida albicans* *Candida* species: quantification, structure and matrix composition. *Med Mycol.* 47:681–689.
- Soares-Silva I, Paiva S, Kötter P, Entian K-D, Casal M. 2004. The disruption of JEN1 from *Candida albicans* impairs the transport of lactate. *Mol Membr Biol.* 21:403–411.
- Staib P, Kretschmar M, Nichterlein T, Kohler G, Michel S, Hof H, Hacker J, Morschhauser J. 1999. Host-induced, stage-specific virulence gene activation in *Candida albicans* during infection. *Mol Microbiol.* 32:533–546.
- Stepanovic S, Vukovic D, Dakic I, Savic B, Švabić-Vlahović M. 2000. A modified microtiter-plate test for quantification of staphylococcal biofilm formation. *J Microbiol Methods.* 40:175–179.
- Taff HT, Nett JE, Zarnowski R, Ross KM, Sanchez H, Cain MT, Hamaker J, Mitchell AP, Andes DR. 2012. A *Candida* biofilm-induced pathway for matrix glucan delivery: implications for drug resistance. *PLoS Pathog.* 8.
- Tobudic S, Kratzer C, Presterl E. 2012. Azole-resistant *Candida* spp. - emerging pathogens? *Mycoses.* 55:24–32.
- Vieira N, Casal M, Johansson B, MacCallum DM, Brown AJP, Paiva S. 2010. Functional specialization and differential

regulation of short-chain carboxylic acid transporters in the pathogen *Candida albicans*. *Mol Microbiol.* 75:1337–1354.

Vylkova S, Carman AJ, Danhof HA, Collette JR, Zhou H, Lorenz MC. 2011. The fungal pathogen *Candida albicans* autoinduces hyphal morphogenesis by raising extracellular pH. *MBio.* 2.

Vylkova S, Lorenz MC. 2014. Modulation of phagosomal pH by *Candida albicans* promotes hyphal morphogenesis and requires Stp2p, a regulator of amino acid transport. *PLoS Pathog.* 10.

Whiteway M, Bachewich C. 2007. Morphogenesis in *Candida albicans*. *Annu Rev Microbiol.* 61:529–553.

Zarnowski R, Westler WM, de Lacmbouh GA, Marita JM, Bothe JR, Bernhardt J, Lounes-Hadj Sahraoui A, Fontaine J, Sanchez H, Hatfield RD, et al. 2014. Novel entries in a fungal biofilm matrix encyclopedia. *MBio.* 5:e01333–e01314.