

Community-Based Pulmonary Rehabilitation Programs in Individuals With COPD

Marisela Barbosa, Renato Andrade, Cristina Argel de Melo, and Rui Torres

BACKGROUND: Community-based pulmonary rehabilitation (PR) programs can be offered to patients with COPD, but the literature on its effects is still not well summarized. Our purpose was to investigate the health-, physical-, and respiratory-related effects of community-based PR in individuals with COPD as compared to control groups. **METHODS:** The PubMed and Embase databases were searched up to May 17, 2021. We included randomized control trials that compared the effects of community-based PR as compared to control groups in individuals with COPD. The risk of bias was judged using the Cochrane Risk of Bias 2 (RoB2). Meta-analysis was performed using a random-effects model to estimate the standardized mean difference (SMD) with 95% CI of the mean changes from baseline between groups. The Grading of Recommendations Assessment, Development, and Evaluation was used to interpret certainty of results. **RESULTS:** We included 10 randomized control studies comprising a total of 9,350 participants with weighted mean age of 62.3 ± 2.38 y. The community-based interventions were based on exercise programs (resistance and/or endurance). All studies were judged as high risk and/or some concerns in one or more domains the risk of bias. All meta-analyses displayed very low certainty of evidence. The community-based PR interventions were significantly superior to control interventions in improving the St. George Respiratory Questionnaire Activity subscore (-0.40 [95% CI -0.72 to -0.08]; $k = 5$, $n = 382$) and total score (-0.73 [95% CI -1.29 to -0.18]; $k = 4$, $n = 268$) and the Chronic Respiratory Disease Questionnaire dyspnea subscore (0.36 [95% CI 0.03 – 0.69]; $k = 6$, $n = 550$). The mean changes from baseline were not different between the groups for all other outcomes. **CONCLUSIONS:** Community-based PR tended to result in superior health-related quality of life and symptoms than control interventions, but the findings were inconsistent across outcomes and with very low certainty of evidence. Further studies are warranted for stronger conclusions. *Key words:* COPD; pulmonary rehabilitation; community based; exercise; systematic review; meta-analysis. [Respir Care 2022;67(5):579–593. © 2022 Daedalus Enterprises]

Introduction

COPD is a multifactorial progressive chronic respiratory noncommunicable disease. Dyspnea, productive coughing, and production of sputum are the most frequent respiratory symptoms and are associated with higher risk of exacerbations, hospitalizations, and poorer outcomes.^{1,2} Although COPD is not fully reversible, pulmonary rehabilitation (PR) plays a key role in managing COPD-related respiratory symptoms, prevents and treats exacerbations; slows down the disease progression; improves exercise tolerance, physical function, and autonomy; decreases the risk of chronic comorbidities; and ultimately improves the health-related quality of life.^{3–8}

The structure design (content and settings) and health care professionals involved in PR programs vary according to cultural context, health care systems, and resources available.⁹

Most studies have been conducted in a hospital-based^{10–13} or home-based^{14–23} setting, with fewer studies in community-based settings. Community-based PR programs are developed in a nonspecialized community health service, in a community center, or at the patient's home.²⁴ The community-based PR programs differ from home-based interventions as the PR component of the program is supervised by a trained health care professional rather than performed at home without any supervision. Community-based PR programs can be offered to patients with COPD as an alternative to hospital-based programs and are important to successfully integrate health care interventions that demand the involvement of both patients and family members in care planning, implementation, and monitoring.^{25,26}

The literature on the effects of community-based PR for individuals with COPD is still not well summarized. There are only a few systematic reviews on this topic, but these

only include a few trials on community-based PR with searches performed more than 5 years ago^{24,27} or are focused on community-based self-management interventions.²⁸ The purpose of this systematic review was to investigate the health-, physical-, and respiratory-related effects of community-based PR in individuals with COPD as compared to control groups.

Methods

This systematic review was conducted according to the Preferred Reporting Items for Systematic Reviews and Meta-Analyses (PRISMA) 2020 statement²⁹ and under the guidance of PRISMA in Exercise, Rehabilitation, Sport Medicine, and Sports Science recommendations.³⁰

Eligibility Criteria

The eligibility criteria were set according to the Participants, Intervention, Comparison, Outcome, and Study design framework. Translation services were not available, so we only included studies written in English language.

Population. We only included studies that comprised individuals with established COPD. Studies comprising mixed populations with respiratory diseases (eg, COPD and asthma) but without provided separate data for COPD participants were excluded. Studies including participants that were only at risk of COPD (not established) were also excluded.

Intervention. We included studies reporting the results of community-based PR programs. As community-based PR

programs, we considered PR interventions were implemented or supervised by a health care professional and that were employed in the community, either in a nonspecialized community health service, in a community center, or at the patient's home.²⁴ Studies that provided supervised community-based PR interventions and that were supplemented by home-based exercises (for maintenance purposes) were considered for inclusion. To be included, the study had to implement an intervention for a minimum of 6 weeks. All studies reporting the results of noncommunity-based PR programs (eg, single exercise, exclusive to home based, hospital based, online or telephone based, ambulatory based) were excluded. Studies that the intervention was only based on education or counseling were also excluded. There was no restriction to who performed the intervention.

Comparator. As comparator group to the PR, we considered groups with usual care, self-management, or wait and see (no intervention). Other noncommunity-based PR programs (eg, hospital based or ambulatory based) were not considered as comparator group because our goal was to compare the community-based PR intervention to a homogenous comparator group without PR intervention.

Outcome. As outcomes, we considered all health-, physical- and respiratory-related outcomes after PR intervention as previously described.³¹ Further description of these outcomes is further detailed on data extraction subsection.

Study design. We only included randomized control trials with at least 10 participants per group. Other types of studies were excluded (reviews, nonrandomized cohort studies, observational, case-control and cross-sectional studies, case series, case studies, qualitative studies). Conference abstracts were also excluded.

Search Strategy

A systematic electronic literature search was conducted on PubMed and Embase databases. All searches were performed independently by 2 authors (MB and RA) from database inception up to in May 17, 2021. The full search strategy for each database is described in Supplement 1 (Supplement 1, see related supplementary materials at <http://www.rc.rcjournal.com>). The reference list of included studies and other relevant reviews was scanned for other potential eligible studies.

Study Selection

All records were exported to EndNote X7 (Thomson Reuters, Toronto, Ontario, Canada), and the duplicate records were removed using the software automated tool

Ms Barbosa is affiliated with Gaia/Espinho Hospital Center, North Rehabilitation Center, Gaia, Portugal; and Câmara Municipal de Arouca, Complexo Municipal Desportivo de Arouca e Piscinas Municipais de Escariz. Mr Andrade is affiliated with Clínica Espregueira-FIFA Medical Centre of Excellence, Porto, Portugal; Dom Henrique Research Centre, Porto, Portugal; and Porto Biomechanics Laboratory (LABIOMEP), Faculty of Sports, University of Porto, Porto Portugal. Dr de Melo is affiliated with School of Allied Health Technologies, Polytechnic Institute of Porto, Porto, Portugal; and CIR, Center for Rehabilitation Research, Polytechnic Institute of Porto, Porto, Portugal. Dr Torres is affiliated with CESPU, North Polytechnic Institute of Health, Paredes, Portugal; and CIR, Center for Rehabilitation Research, Polytechnic Institute of Porto, Porto, Portugal.

Supplementary material related to this paper is available at <http://rc.rcjournal.com>.

The authors have disclosed no conflicts of interest.

This work was primarily performed at Faculty of Sports, University of Porto, Porto, Portugal.

Correspondence: Marisela Barbosa MSc. E-mail: mariselabarbosa@gmail.com.

DOI: 10.4187/respcare.09627

and hand checked for any duplicate records. Two authors (MB and RA) independently scanned all titles and abstracts and identified all potentially relevant studies that required further analysis. The full text of all the potentially relevant studies was analyzed according to the eligibility criteria. Disagreements between the 2 authors on study selection were resolved by consensus.

Data Extraction

Two authors (MB and RA) independently extracted all data; disagreements were discussed until consensus. We used an Excel spreadsheet to record data related to (1) study characteristics (study design and country), (2) population characteristics (sample size, mean age, female/male ratio, FEV₁, COPD classification, and smoking status), (3) intervention characteristics (type, frequency, duration and setting of intervention, adherence to the intervention, who performed the intervention, and comparator group), and (4) the baseline and post-intervention outcomes (health, physical, and respiratory related). The intervention outcomes were further categorized into domains.³¹ Physical-related measures comprised exercise capacity, functional capacity, peripheral muscle strength, body composition, and quantification of physical activity. The health-related outcomes included quality of life, symptoms (dyspnea, anxiety, and depression), and mental health and behavior. The respiratory-related outcomes measured expiratory and inspiratory lung function. Exacerbations, hospitalizations, and medication taken were also collected.

Data Management

When the study reported data for the same outcome for several follow-up time points, we used the data from 12-months follow-up (when available); otherwise, we used the closest follow-up time point and analyzed the influence of follow-up in sensitivity analyzes. Studies with overlapping populations reporting the same outcomes but with different follow-ups we used the study that presented the 12-month follow-up. Whenever possible, we used data from the participants compliant to the protocol. Missing data were requested by e-mail to corresponding authors. Missing raw SD was imputed (if possible) using within-group standard errors or confidence intervals as suggested by Cochrane Handbook.³² When data were reported within figures, we used the WebPlotDigitizer software to extract the means and SDs.³³ For comparisons of studies with 2 or more intervention groups, we divided the sample size of the control group proportionally to the sample size each intervention group to eschew overweighting the data synthesis with the same group sample.³⁴ Population characteristics are presented as pooled means and SDs weighted to the sample

size (if continuous variables)³⁵ or pooled rates (if dichotomous or categorical variables).

Risk of Bias

The risk of bias was assessed using the revised Cochrane Risk of Bias 2 (RoB2) tool.^{29,30,36} This RoB2 appraises 5 different domains of bias that arise from (1) randomization process, (2) deviations from intended interventions, (3) missing outcome data, (4) measurement of outcomes, and (5) selection of the reported result. Two authors (MB and RA) judged each domain as “low risk of bias,” “some concerns,” or “high risk of bias.” The overall risk of bias judgment was based on the bias judgment from the 5 domains.

Data Synthesis

Quantitative synthesis (meta-analysis) was conducted on RStudio 3.3.1 software (RStudio, Boston, Massachusetts) using the “dmetar,” “meta,” and “metafor” packages. Meta-analyses were performed when there were 3 or more comparable studies for the same outcome. A random-effects model (Sidik-Jonkman estimator with Hartung-Knapp adjustment³⁷) was used due variations in community-based PR interventions and specific methods of outcome collection/scoring. Continuous outcomes are expressed as standardized mean differences (SMDs) with their 95% CI. The SMD magnitude was interpreted as large (≥ 0.8), moderate (0.5–0.79), or weak (0.2–0.49).³⁸ The mean change from baseline was used for all meta-analyses. When studies did not provide the mean and SD of changes from baseline, we computed the mean change from baseline to estimate the mean improvement assuming a correlation coefficient of $r = 0.5$ to calculate the SD of mean changes.³⁹ The level of statistical heterogeneity for pooled data was established using I-squared statistics, which is interpreted as not important ($< 50\%$), moderate (50–75%), and high ($> 75\%$).⁴⁰

Sensitivity analyses were performed by removing studies with (1) a follow-up time point that is different from 12 months, (2) a control group that is different from usual care, and (3) outlier results (the 95% CI of study did not cross the 95% CI of the pooled effect). Further sensitivity analyses were performed by using correlation coefficients of $r = 0.3$ and $r = 0.7$ to test the effect of this coefficient in the pooled effect. The risk of publication bias was assessed by inspecting the funnel plots for symmetry and with the Eggers test⁴¹ if there were 10 or more studies for the same meta-analysis.

Certainty of Evidence

Two authors (MB and RA) rated the certainty of evidence using the Grading of Recommendations Assessment, Development, and Evaluation approach.⁴² Certainty of

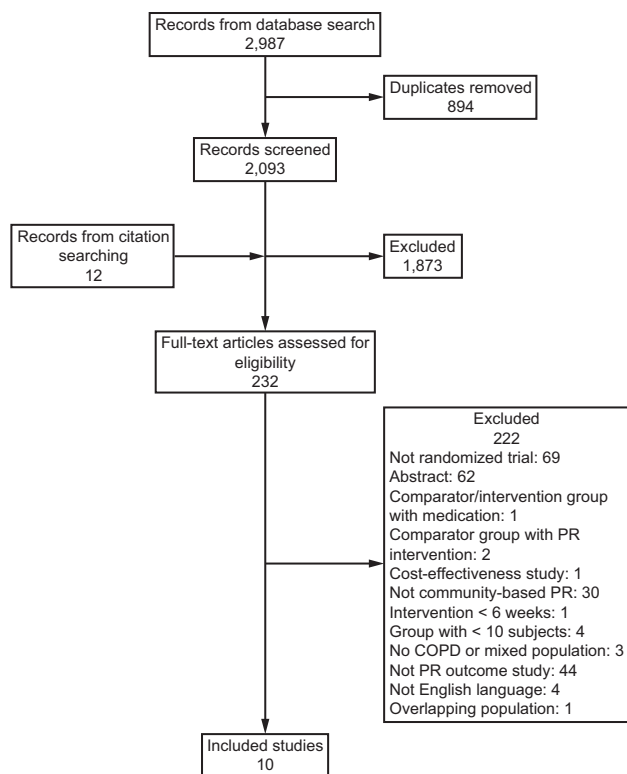


Fig. 1. Flow chart. PR = pulmonary rehabilitation.

evidence was graded as high, moderate, low, or very low certainty. Certainty was downgraded if there were concerns with risk of bias, inconsistency, imprecision, and indirectness. Publication bias could not be reliably assessed (no meta-analysis had 10 or more studies), and no study was downgraded due to risk of publication bias.

Results

Study Selection

The database searches yielded a total of 2,987 results. Following duplicates removal, there were 2,093 unique records, of which 221 full texts were selected for further analysis. Hand searches yielded another 12 records. A total of 10 studies⁴³⁻⁵² fulfilled the eligibility criteria and were included for qualitative analysis (Fig. 1). The majority of the studies was performed in Europe (80%).

Risk of Bias

All randomized control trials were judged as high risk (80%) or some concerns (20%). No study was judged with an overall low risk of bias (Fig. 2). Nearly all studies (90%) were judged with low risk of selection bias arising from randomization process. Most studies (70%) were judged with some concerns regarding performance bias due to

deviation from intended interventions, with 2 studies judged with high-risk bias in this domain. The most common concerns for risk of performance bias were related inability to blind of participants or caregivers implementing the interventions because interventions were exercise based and some deviations that occurred due to the trial context. Risk of attrition bias was also common (50% of studies with high risk and 20% with some concerns) that was related to high rates of dropout and/or loss to follow-up. Four studies (40%) also showed some concerns for detection bias as these studies failed to blind the outcome assessor. More than half of the studies was judged with high risk (30%) or some concerns (40%) for risk of selective reporting bias.

Population Characteristics

There was a total of 9,350 participants with weighted mean age of 62.30 ± 2.38 y, with a homogenous age distribution among groups (62.30 ± 2.12 y for intervention group and 62.20 ± 2.50 y for control group). The overall sample was homogenous according to sex (4,687 males and 4,663 females). The median sample size was 125 participants but ranged from 26–8,217 participants (Table 1).

The weighted mean FEV₁ predicted (%) was 26.7 ± 10.3 , which was similar between intervention and control groups (26.7 ± 10.1 and 26.7 ± 10.4 , respectively). Around half of participants (56%) had history of smoking (either current or ex-smokers). Two studies^{43,48} did not report the percentage of participants that was smokers.

Intervention Characteristics

All interventions were community-based exercise programs (resistance and/or endurance), with 3 studies^{44,47,50} supplementing the intervention with specific PR breathing exercises. Interventions were delivered by physiotherapists (7 studies), nurses (3 studies), fitness instructors (2 studies), or a combination of health care providers (1 study). Interventions ranged from daily to 1 session per week, with a duration of 30–120 min per session (Table 2). Two studies^{44,46} tailored the exercise programs to participants' needs. The total duration of interventions ranged from 6 weeks–2 y, with 4 studies^{45,50-52} supplementing the main intervention (compulsory) with further months of home-based intervention for maintenance (optional). Adherence to the intervention protocol varied from 36.1–95.6%, with 3 studies^{46,49-51} not reporting the adherence rate. The setting was heterogeneous across studies, but the majority of studies recruited participants from primary care services (referral from hospital). As comparators, most studies (80%) employed a control group with only usual care (without any further

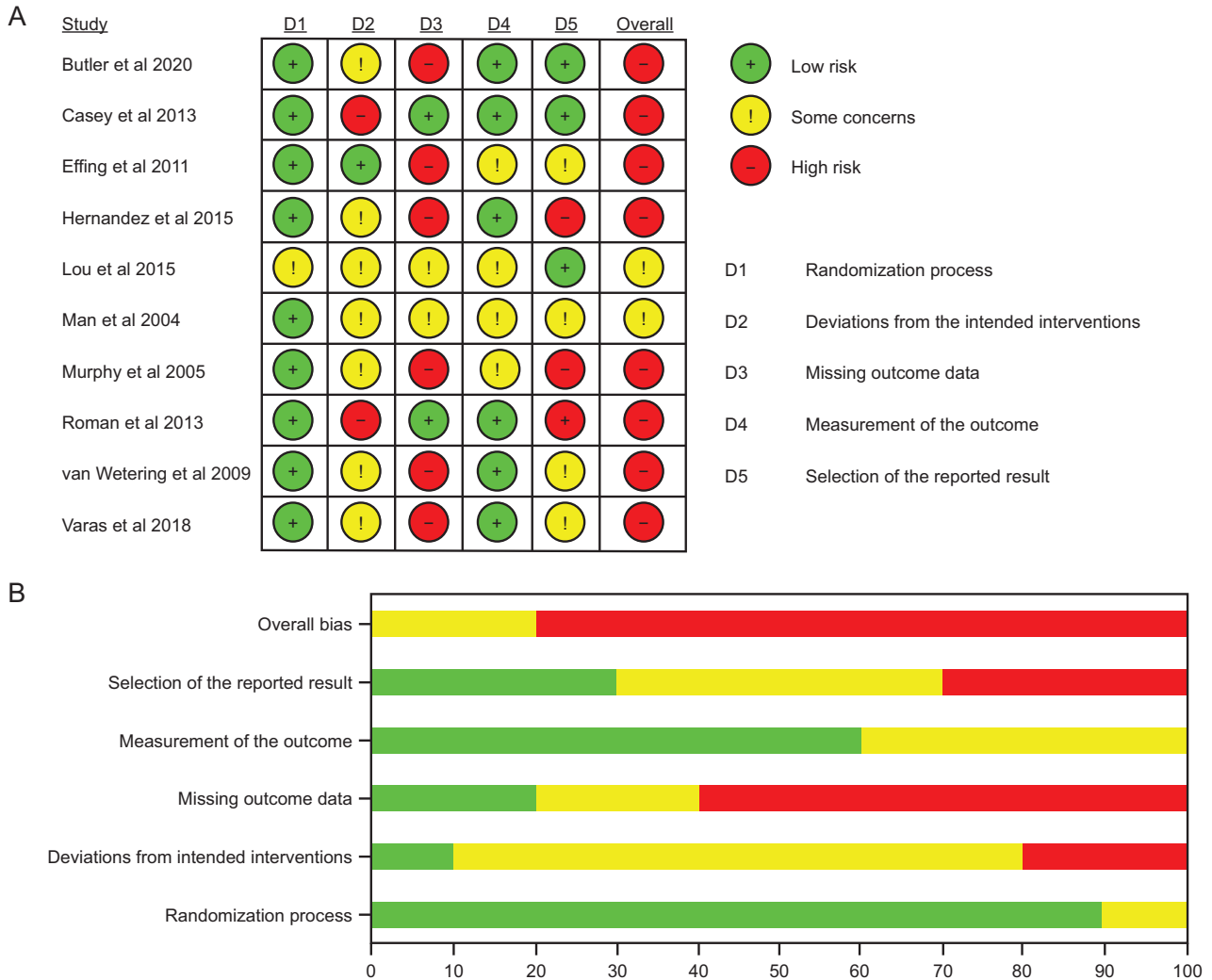


Fig. 2. Risk of bias judgment using the Cochrane Risk of Bias 2 tool. A: Domain-based risk of bias for each included study. B: Unweighted summary of risk of bias for each domain across studies.

interventions), and 2 studies^{45,52} applied a self-management program.

Outcome Measures

Thirty-eight different outcomes and measures were reported among the included studies, which were categorized within 12 different domains (Table 3). Exercise capacity (90%), health-related quality of life (90%), and symptom-related measures (60%) were the most commonly reported domains. Exacerbations (40%), hospitalizations (50%), and medication (30%) were also frequently reported.

Follow-up time points ranged from 6 weeks–48 months. The most common follow-up time points were 3 months (4 studies) and 12 months (5 studies). Other reported time points included 6 weeks (1 study), 4 months (1 study), 6 months (1 study), 7 months (1 study), 24 months (2 studies), and 48 months (1 study).

Data Synthesis

A total of continuous 11 outcomes was eligible for meta-analysis from 4 different domains: exercise capacity, health-related quality of life, symptoms, and lung function. Only 3 outcomes from the health-related quality-of-life domain, St. George Respiratory Questionnaire (SGRQ) activity subscore, SGRQ total score, and Chronic Respiratory Disease Questionnaire (CRQ) dyspnea subscore, were significantly different between intervention and control groups when comparing the mean change from baseline to follow-up (Fig. 3). The community-based PR interventions were significantly superior to control interventions in improving the SGRQ activity subscore (SMD -0.40 [95% CI -0.72 to -0.08]; weak effect and very low certainty), SGRQ total score (SMD -0.73 [95% CI -1.29 to -0.18]; moderate effect and very low certainty), and CRQ dyspnea subscore

Table 1. Characteristics of Included Studies and Population

Reference	Country	Group	N	Age, y	F:M	FEV ₁ (%)	COPD Classification, GOLD %	Smoking Habits, %
Butler et al, 2020 ⁴²	Canada	Intervention	49	68 (9)	21/28	54.3 (20.4)	Moderate to severe COPD	Smoking (packs per year): 45 (23)
		Control	48	69 (9)	26/22	53.3 (18.8)	Moderate to severe COPD	Smoking (packs per year): 50 (25)
Casey et al, 2013 ⁴³	Ireland	Intervention	178	68.8 ± 10.2	61/117	57.6 ± 14.3	GOLD II: 68.5 GOLD III: 31.5	Non-smoker: 9.0 Ex-smoker: 51.7 Smoker: 39.3
		Control	172	68.4 ± 10.3	66/106	59.7 ± 13.8	GOLD II: 76.2 GOLD III: 23.8	Non-smoker: 15.7 Ex-smoker: 50.0 Smoker: 34.3
Eiffing et al, 2011 ⁴⁴	Netherlands	Intervention	77	62.9 ± 8.1	32/45	49.6 ± 14.2	Moderate to severe COPD	Smoker: 35.0
		Control	76	63.9 ± 7.8	32/44	50.5 ± 17.0	Moderate to severe COPD	Smoker: 34.0
Hernández et al, 2015 ⁴⁵	Spain and Belgium	Intervention	71	73.0 ± 8.0	12/59	41.0 ± 19.0	Moderate to severe COPD	Smoker: 13.0
		Control	84	75.0 ± 9.0	12/72	44.0 ± 20.0	Moderate to severe COPD	Smoker: 14.0
Lou et al, 2015 ⁴⁶	China	Intervention	4,197	61.6 ± 13.5	2,191/2,006	23.0 (20.1–24.3) ^{**}	GOLD I: 15.0 GOLD II: 41.7 GOLD III: 26.3 GOLD IV: 17.1	Smoker: 45.2
		Control	4,020	61.4 ± 13.2	2,096/1,924	22.9 (20.0–24.4) ^{**}	GOLD I: 14.7 GOLD II: 41.6 GOLD III: 26.3 GOLD IV: 17.4	Smoker: 44.7
Man et al, 2004 ⁴⁷	England	Intervention	21	69.6 ± 9.2	12/9	41.7 ± 18.9	NR	NR
		Control	21	70.7 ± 9.3	13/8	36.7 ± 14.9	NR	NR
Murphy et al, 2005 ⁴⁸	Ireland	Intervention	13	67.0 ± 9.7	6/7	38.0 ± 12.0	Moderate to severe COPD	Smoker: 38.5
		Control	13	65.0 ± 11.0	3/10	42.0 ± 12.0	Moderate to severe COPD	Smoker: 30.8
Román et al, 2013 ⁴⁹	Spain	Intervention 1	22	64.1	4/18	59.9	Moderate COPD	Non-smoked: 0 Ex-smoker: 68.2 Smoker: 31.8
		Intervention 2	26	64.9	5/21	60.9	Moderate COPD	Non-smoked: 3.8 Ex-smoker: 61.5 Smoker: 34.6
		Control	23	63.4	4/19	60.1	Moderate COPD	Non-smoked: 8.7 Ex-smoker: 56.5 Smoker: 34.8
van Wetering et al, 2009 ⁵⁰	Netherlands	Intervention	102	65.9 ± 8.8	30/72	58.0 ± 17.0	GOLD stage 2 or 3	Smoker: 33.0
		Control	97	67.2 ± 8.9	28/69	60.0 ± 15.0	GOLD stage 2 or 3	Smoker: 34.0

(Continued)

Table 1. Continued

Reference	Country	Group	N	Age,y	F:M	FEV ₁ (%)	COPD Classification, GOLD %	Smoking Habits, %
Varas et al,2018 ⁵¹	Spain	Intervention	21	69.5 ± 7.4	3/18	45.8 ± 16.5	NR	Non-smoked: 14.3 Ex-smoker: 81.0 Smoker: 4.8
		Control	19	64.8 ± 9.1	6/13	52.3 ± 15.7	NR	Non-smoked: 10.5 Ex-smoker: 78.9 Smoker: 10.5

* Data are median and interquartile range unless otherwise indicated.
 † Data calculated based on the 3,428 (intervention group) and 2,803 (control group) participants that did not drop out.
 F:M = female:male
 GOLD = Global Initiative for Chronic Obstructive Lung Disease system (which categorizes air flow limitation into 4 stages)
 NR= Not reported

(SMD 0.36 [95% CI 0.03–0.69]; weak effect and very low certainty). For all other outcomes, the mean changes were not statistically different between the groups (Table 4 and Supplement 2, see related supplementary materials at <http://www.rc.rcjournal.com>).

More than one-third of the meta-analyses displayed statistically significant heterogeneity (36%). When analyzing the sensitivity analyses using 0.3 and 0.7 as correlation coefficients (Supplement 3, see related supplementary materials at <http://www.rc.rcjournal.com>), the heterogeneity did not change significantly in almost all analyses; only the CRQ mastery outcome changed to significant heterogeneity using the 0.7 correlation coefficient. Using the 0.3 correlation coefficient did not yield any influence on the effect sizes, but when using the 0.7 value, only the SGRQ total score was statistically significant between groups. Sensitivity analyses by removing studies outside the 12-month follow-up end point tended to slightly decrease the heterogeneity figures (Supplement 4, see related supplementary materials at <http://www.rc.rcjournal.com>), but whereas the intergroup differences on CRQ dyspnea outcome remained statistically significant, the SGRQ total score was not different between groups. Sensitivity analyses by removing studies with self-management control group produced no discernible changes in heterogeneity, but no outcome remained statistically different between groups. We also performed sensitivity analysis by removing the study Lou et al⁴⁷ with a high sample size (overrepresented in meta-analyses), but no significant changes were seen in the pooled effect size.

Exacerbations, hospitalizations, and intake of medication were poorly reported across studies. Three studies reported the rate of exacerbations, with one study⁴⁹ showing a lower rate for the community-based PR group and 2 studies^{43,50} showing a comparable rate between community-based PR and usual care groups. Four studies^{43,47,48,50} reported the rate of hospitalizations, with a trend to a higher rate in the usual care group. Three studies^{46,47,50} reported the rate of medication intake showing inconsistent findings across studies when comparing the community-based PR and usual care groups (Table 5).

Discussion

The main finding of our systematic review with meta-analysis is that community-based PR interventions tended to result in superior improvements in health-related quality of life and symptoms (dyspnea) than control interventions. These findings are clinically relevant as dyspnea is a frequent respiratory symptom in patients with COPD and is associated with higher risk of exacerbations, hospitalizations, and poorer outcomes.^{1,2} Therefore, in addition to improving the health-related quality of life, community-

Table 2. Characteristics of Intervention and Control Groups

Reference	Intervention	Who Performed?	Type	Frequency (min)	Duration, mo	Adherence, %	Setting	Comparator
Butler et al, 2020 ⁴²	Community-based exercise program	Certified fitness instructor	Exercised-based (endurance and resistance training)	2–3x wk (90)	12.0	48.7	Community sites	Usual care
Casey et al, 2013 ⁴³	Community-based exercise program	Physiotherapist and nurse	PR + exercised-based (tailored to participants' need)	1x wk (60)	2.0	43.0–86.0	Out-patient general practitioner clinics	Usual care
Effing et al, 2011 ⁴⁴	Community-based exercise program	Trained physiotherapists	Exercised-based (endurance and resistance training)	2–3x wk	6.0 (compulsory) + 5.0 (optional)	72.7	Out-patient pulmonary clinic	Self-management programmed only
Hernández et al, 2015 ⁴⁵	Community-based integrated care	Specialized nurse	Therapeutic plan was customized to each patient individual frailty factors		12.0	NR	Tertiary hospitals	Usual care
Lou et al, 2015 ⁴⁶	Community-based health management intervention	Mixed health care providers and general practitioners	PR and resistance training	Daily	48.0	91.5–95.6	Community health-care units of rural areas	Usual care
Man et al, 2004 ⁴⁷	Community-based pulmonary rehabilitation	Respiratory physiotherapists, nurses, and fitness instructors	Exercised-based (endurance and resistance training)	2x wk (120) + (20) home-based (daily)	2.0	73.0	Primary care (referral after hospital admission)	Usual care
Murphy et al, 2005 ⁴⁸	Community-based supervised home-based program	Chartered physiotherapist	Exercised-based (endurance and resistance training)	2x wk (30–40) + (15) home-based (daily)	1.5	NR	Primary care (referral after hospital admission)	Usual care
Román et al, 2013 ⁴⁹	Community-based PR program	Physiotherapist	PR + resistance training	1x wk (60)	3.0	69.4	Primary health centers	Usual care
van Wetering et al, 2009 ⁵⁰	Community-based exercise program	Physiotherapist	Exercised-based (endurance and resistance training)	1x wk (60)	3.0 (compulsory) + 9.0 (maintenance)	36.1	Primary health centers	Usual care
Varas et al, 2018 ⁵¹	Community-based exercise program	Physiotherapist	Endurance (walking)	2x wk (30) + (20) home-based (2x daily)	2.0 (compulsory) + 3.0 (maintenance)	NR	Primary care (referral from hospital)	Usual care
				5x wk(30–60)		89.5	Primary care (referral from hospital)	Self-management program only

NR = Not reported.

COMMUNITY-BASED PULMONARY REHAB IN COPD

Table 3. Characterization of Post-Intervention Outcomes and Measures Grouped by Outcome Domain

Domain and Outcomes/Measure Reported	Studies no. (%)
Exercise capacity	9 (90)
Walking (distance)	9 (90)
6-min walk test	4 (40)
Incremental shuttle walk test	2 (20)
Endurance shuttle walk test	2 (20)
Shuttle walk test	2 (20)
Endurance capacity (time)	3 (30)
Endurance shuttle walk test	1 (10)
Cycle endurance test	1 (10)
3-min step test	1 (10)
Endurance capacity (repetitions)	1 (10)
Number of chair stands (in 30 s)	1 (10)
Exercise performance	1 (10)
Peak exercise capacity (W)	1 (10)
Health-related quality of life	9 (90)
St. George Respiratory Questionnaire	5 (50)
Short Form 36-Item	1 (10)
Chronic Respiratory Disease Questionnaire	5 (50)
EuroQol EQ-5D	2 (20)
Clinical COPD Questionnaire	1 (10)
Symptoms	6 (60)
Dyspnea	5 (50)
Modified Medical Research Council Dyspnea Scale	4 (40)
Medical Research Council Dyspnea Scale	1 (10)
Borg dyspnea score (after walking)	1 (10)
Anxiety and depression	3 (30)
Hospital Anxiety and Depression Scale	3 (30)
Mental health and behavior	3 (30)
Self-efficacy	1 (10)
COPD Self-Efficacy scale	2 (20)
Awareness	1 (10)
COPD awareness score	1 (10)
Lung function	3 (30)
FEV ₁ %	2 (20)
FVC (l)	1 (10)
FEV ₁ (l)	1 (10)
FEV ₁ /FVC (l)	1 (10)
Maximal inspiratory mouth pressure (kPa)	1 (10)
Functional capacity	2 (20)
Duke Activity Status Index	1 (10)
Lawton index	1 (10)
Peripheral muscle strength	1 (10)
Handgrip force (lb)	1 (10)
Isometric quadriceps peak torque (Nm)	1 (10)

(Continued)

Table 3. Continued

Domain and Outcomes/Measure Reported	Studies no. (%)
Body composition	3 (30)
Percentage of fat-free mass	2 (20)
Body mass index	2 (20)
Physical activity	2 (20)
Steps per day	2 (20)
Modified Baecke Questionnaire	1 (10)
Multiple domains	1 (10)
BODE index	1 (10)
Exacerbations, hospitalizations, and medication	7 (70)
Exacerbations	3 (30)
Hospitalizations	4 (40)
Medication	3 (30)
Perceived effectiveness	1 (10)
Perceived effectiveness (5-point Likert scale)	1 (10)

BODE = body mass index, air flow obstruction, dyspnea, and exercise

based PR interventions can decrease the symptoms of dyspnea and the risk of exacerbations and the need for hospitalization. These implications will ultimately result in a significant socioeconomic impact for patients with COPD and reduce the load of hospital resources.⁵⁵⁻⁵⁸

Our findings should, however, be interpreted with some caution. The results from meta-analyses were inconsistent across outcomes, with significantly superior effect in the community-based PR group for only 3 of the 11 outcomes analyzed. The certainty of evidence was judged as very low for all outcomes, and most studies show an overall high risk of bias. Although there were significant superior effects for the community-based PR group at the SGRQ activity subscore, SGRQ total score, and CRQ dyspnea subscore, the effect ranged from weak to moderate. The findings of the quantitative syntheses often showed conflicting and imprecise results, with the pooled SMD crossing either or both the -0.5 and 0.5 effect size. When analyzing the results in sensitivity analyses, some of the findings were no longer statistically significant, especially when removing the studies with a self-management control group.

Over the last 5 years, there have been several systematic reviews that underpin positive effects of exercise-based PR (either supervised or unsupervised)^{14,27,59-80} or respiratory exercises^{79,81-83} on several health-related outcome domains in subjects with COPD. However, none of the previous systematic reviews focused community-based PR interventions, and the majority of their meta-analysis findings were reported without informing the degree of certainty of

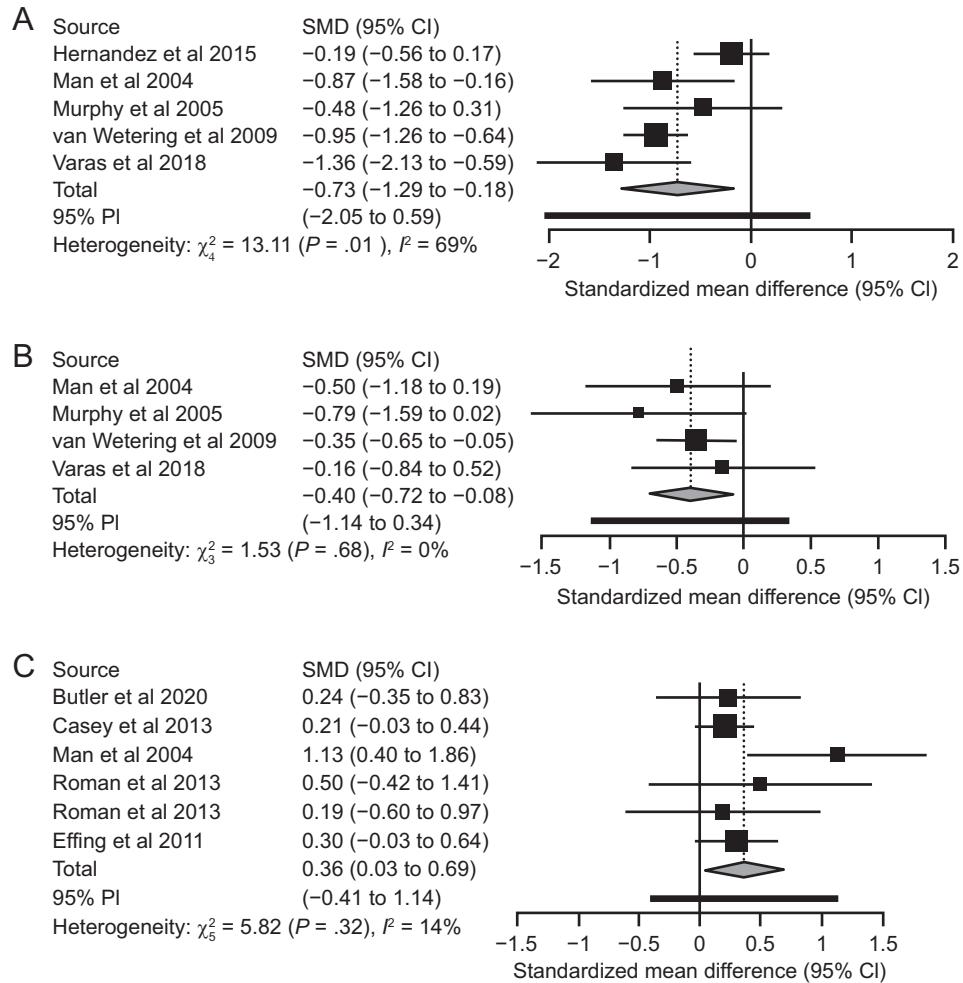


Fig. 3. Forest plots for statistically significant outcomes comparing community-based pulmonary rehabilitation (PR) and control interventions. A: St. George Respiratory Questionnaire (SGRQ) total score: A negative standardized mean difference (SMD) indicates superior improvement for the community-based PR group. B: SGRQ activity subscore: A negative SMD indicates superior improvement for the community-based PR group. C: Chronic Respiratory Disease Questionnaire dyspnea subscore: A positive SMD indicates superior improvement for the community-based PR group.

evidence. There is a previous systematic review²⁸ of randomized control trials that found no significant effect in health-related quality of life outcomes for community-based PR interventions. However, this systematic review²⁸ only included community-based self-management interventions, which was not considered in our systematic review. Our systematic review focused on community-based PR interventions that were led by a trained health care professional or fitness instructor. Nevertheless, although we found a significant effect for SGRQ activity subscore, SGRQ total score, and CRQ dyspnea subscore, other outcomes were not significantly superior as compared to control groups, which is in line with the previously mentioned systematic review²⁸ that found no significant differences.

The rate of exacerbations was comparable between the community-based PR and control interventions, whereas the need for medication showed inconsistent findings.

Only the rate of hospitalizations seems to be reduced in the community-based PR group. Only a few studies analyzed these outcomes, which were heterogeneously collected and reported and thus not allowing any sound conclusions. Future studies must consider collecting these outcome events and reported them in a more standardized fashion to allow a clearer picture. The literature on this topic is still not conclusive, and further research is warranted. Reducing the risk of hospitalization is important in patients with COPD because a recent hospitalization (in the previous year) is a primary risk factor for further COPD-related readmissions.⁸⁴ Implementing PR interventions that start no longer than 3 weeks after hospital discharge from an acute COPD exacerbation or that add an educational component to exercise program seem to be more effective in reducing the rate of hospital readmissions.¹²

COMMUNITY-BASED PULMONARY REHAB IN COPD

Table 4. Quantitative Synthesis of the Comparison of Intervention and Control Groups for Post-Intervention Outcome Mean Changes

Outcome	k, n	I ² %, P	SMD (95% CI)	Grade
6MWD	5, 6,506	99.6, P < .001	0.91 (−1.63 to 3.44)	⊕○○○* † ‡ §
SGRQ total	5, 382	69.5, P = .01	−0.73 (−1.29 to −0.18)	⊕○○○* † ‡ §
SGRQ symptoms	4, 268	42.9, P = .15	−0.08 (−0.82 to 0.65)	⊕○○○* ‡ §
SGRQ activity	4, 268	0, P = .68	−0.40 (−0.72 to −0.08)	⊕○○○* ‡ §
SGRQ impacts	4, 268	68.0, P = .02	−0.81 (−1.69 to 0.07)	⊕○○○* † ‡ §
CRQ dyspnea	6, 550	14.1, P = .32	0.36 (0.03–0.69)	⊕○○○* ‡ §
CRQ fatigue	6, 550	25.0, P = .25	0.22 (−0.15 to 0.59)	⊕○○○* ‡ §
CRQ emotional	6, 550	24.5, P = .25	0.22 (−0.11 to 0.54)	⊕○○○* ‡ §
CRQ mastery	6, 550	39.9, P = .14	0.23 (−0.21 to 0.68)	⊕○○○* ‡ §
FEV ₁ %	4, 6,457	0, P = .45	0.17 (−0.17 to 0.51)	⊕○○○* §
mMRC	5, 6,569	99.6, P < .001	−0.05 (−2.24 to 2.14)	⊕○○○* † ‡ §

* Downgraded two levels due to very serious study limitations (high risk of bias).
 † Downgraded one level due to serious inconsistency (substantial and significant heterogeneity and/or 95% CI does not overlap).
 ‡ Downgraded one level due to serious indirectness (heterogeneous control groups).
 § Downgraded one level due to serious imprecision (wide 95% CIs crossing the 0.5 or −0.5 SMD and/or small sample size n < 800).^{53,54}
 || Downgraded two levels due to very serious imprecision (very wide 95% CIs crossing both the 0.5 and −0.5 SMD, regardless of sample size).⁵⁴
 k = number of intervention comparisons (note that for a single study more than one comparison can be represented if the study has three or more intervention arms).
 I² = heterogeneity
 SMD = standardized mean difference
 6MWD = 6-min walking distance
 SGRQ = St. George Respiratory Questionnaire
 CRQ = Chronic Respiratory Disease Questionnaire
 mMRC = modified Medical Research Council Dyspnea Scale
 ⊕○○○ = very-low certainty

Table 5. Rates of Exacerbations, Hospitalizations, and Intake of Medication

Outcome	Study	Community-Based PR (%)	Usual Care (%)	
Exacerbations	Butler et al, 2020	15/43 (34.9)	11/36 (30.6)	
		11/36 (30.6)	13/32 (40.6)	
	Murphy et al, 2005	2/13 (15.4)	5/13 (38.5)	
	Román et al, 2013	5/22 (22.7)	3/19 (15.8)	
Hospitalizations		3/24 (12.5)		
	Butler et al, 2020	9/36 (25.0)	7/32 (21.9)	
	Lou et al, 2014	687/3,418 (20.1)	1,015/2,803 (36.2)	
	Man et al, 2004	6/18 (33.3)	9/16 (56.3)	
Medication intake		7/20 (35.0)	9/21 (42.8)	
		7/23 (30.3)		
	Long-acting β agonists	Hernández et al, 2015	10/59 (16.9)	20/55 (36.4)
		Lou et al, 2014	561/3,418 (16.4)	64/2,803 (2.3)
Inhaled corticosteroids	Hernández et al, 2015	53/59 (80.9)	50/55 (83.3)	
	Lou et al, 2014	1,111/3,418 (32.5)	297/2,803 (10.6)	
Chronic systemic corticosteroids	Lou et al, 2014	1,391/3,418 (40.7)	580/2,803 (20.7)	
Antibiotics or corticoids	Román et al, 2013	5/19 (26.3)	6/18 (33.4)	
		4/20 (20.0)		
Anticholinergics	Hernández et al, 2015	56/59 (94.9)	49/55 (89.1)	
Theophylline	Lou et al, 2014	1,538/3,418 (45.0)	975/2,803 (34.8)	
Long-term oxygen therapy	Hernández et al, 2015	39/59 (66.1)	28/55 (50.9)	

PR = Pulmonary rehabilitation

The heterogeneity in the outcomes and measures reported among the included studies was another concern, which is also seen in other systematic reviews.^{31,85-88} There

is a clear need to standardize a set of core outcomes to measure the improvement of individuals with COPD following PR interventions.³¹ Future studies should assess the

importance of each outcome for PR involving different stakeholders and decide on which are the outcomes with higher priority. The follow-up time points to assess patient improvement also varied considerably across included studies. Future research should focus on standardizing the follow-up time points, very short-term, short-term, midterm, and long-term follow-up, to allow a more direct and valid comparison between studies. The use of a comparable and interchangeable outcome throughout the studies would allow to reach a more consistent recommendation in future systematic reviews with meta-analysis to answer if the community-based PR programs are superior in improving the health-related quality of life and symptoms in patients with COPD.

There are some limitations that need to be acknowledged. Although we excluded studies with home-based PR interventions, some of the included studies implemented a component of home-based exercises. However, the home-based component of the included studies was intended only as reinforcement or maintenance to the main community-based program. We intended to perform subgroup analyses stratified by grade of COPD, but the included studies did not provide their results separately according the COPD grading. We expected to stratify the meta-analyses according to the categorization of follow-up duration (very short term, short term, midterm, and long term), but there were not enough studies (at least 3 studies for the same outcome and same follow-up time point) besides the 12-month time point; therefore, we undertook the meta-analyses with the 12-month follow-up (or the closest follow-up time point) and then analyzed the effect of follow-up in sensitivity analysis, which effects were negligible. We also intended to test for the risk of publication bias, but as the meta-analyses included fewer than 10 studies, it was not reliable to use the funnel plots or the Egger test; the results should thus be interpreted with caution because the risk reporting bias could not be evaluated. There were covariates that could be analyzed in a meta-regression analysis (duration and adherence to the intervention), but given the small number of studies, the meta-regression is likely underpowered. The use of minimally clinical important difference (MCID) cutoffs would improve the applicability of our findings, but as we used the SMDs instead (due to the heterogeneity across studies), the use of MCID values was not possible; however, the SMDs are translated into effect sizes that showed weak to moderate effects. A moderate effect size (SMD > 0.5) has been suggested to approximate, in most cases, to the MCID.⁸⁹ There were only a few studies that reported the rates of exacerbations, hospitalizations, and intake of medication; and the way these outcomes were collected was not comparable across included studies, which precluded us from meta-analyzing the relative risk of these outcomes comparing community-based PR versus usual care. We thus decided to analyze these outcome as simple rates. Another limitation was that some studies had

considerable dropout rates and did not report separately the baseline outcome data for those subjects who finished the trial; in these studies, when calculating the improvement for the meta-analyses, we used the total sample for the baseline outcome and the participants that were adherent to the protocol (or that did not drop out) for the outcome follow-up.

Conclusions

Community-based PR interventions tended to result in superior health-related quality of life and symptoms than control interventions, but the findings were inconsistent across outcomes and with very low certainty of evidence. A superiority of community-based PR over usual care could still not be established, and future studies are needed to strengthen the evidence on community-based PR interventions in patients with COPD. There were, however, some significant findings that should encourage the investment of resources into researching and improving strategies of community-based PR interventions. Further studies are warranted for stronger and more definitive conclusions.

REFERENCES

1. Burgel PR, Nesme-Meyer P, Chanez P, Caillaud D, Carré P, Perez T, et al. Cough and sputum production are associated with frequent exacerbations and hospitalizations in COPD subjects. *Chest* 2009;135(4):975-982.
2. Miravittles M. Cough and sputum production as risk factors for poor outcomes in patients with COPD. *Respir Med* 2011;105(8):1118-1128.
3. McCarthy B, Casey D, Devane D, Murphy K, Murphy E, Lacasse Y. Pulmonary rehabilitation for chronic obstructive pulmonary disease. *Cochrane Database Syst Rev* 2015;23(2):CD003793.
4. Berry MJ, Shields KL, Adair NE. Comparison of effects of endurance and strength training programs in patients with COPD. *COPD* 2018;15(2):192-199.
5. Vaes AW, Delbressine JML, Mesquita R, Goertz YMJ, Janssen DJA, Nakken N, et al. Impact of pulmonary rehabilitation on activities of daily living in patients with chronic obstructive pulmonary disease. *J Appl Physiol* (1985) 2019;126(3):607-615.
6. Demeyer H, Donaire-Gonzalez D, Gimeno-Santos E, Ramon MA, Battle J, Benet M, et al. Physical activity is associated with attenuated disease progression in chronic obstructive pulmonary disease. *Med Sci Sports Exerc* 2019;51(5):833-840.
7. Charikiopoulou M, Nikolaidis PT, Knechtel B, Rosemann T, Rapti A, Trakada G. Subjective and objective outcomes in patients with COPD after pulmonary rehabilitation – The impact of comorbidities. *Front Physio* 2019;10(286).
8. Vestbo J, Hurd SS, Agustí AG, Jones PW, Vogelmeier C, Anzueto A, et al. Global strategy for the diagnosis, management, and prevention of chronic obstructive pulmonary disease: GOLD executive summary. *Am J Respir Crit Care Med* 2013;187(4):347-365.
9. Spruit MA, Singh SJ, Garvey C, ZuWallack R, Nici L, Rochester C, et al; ATS/ERS Task Force on Pulmonary Rehabilitation. An official American Thoracic Society/European Respiratory Society statement: key concepts and advances in pulmonary rehabilitation. *Am J Respir Crit Care Med* 2013;188(8):e13-64.
10. Elliott M, Watson C, Wilkinson E, Musk AW, Lake FR. Short- and long-term hospital and community exercise programs for patients with chronic obstructive pulmonary disease. *Respirology* 2004;9(3):345-351.

11. Elkhateeb NB, Elhadidi AA, Masood HH, Mohammed AR. Pulmonary rehabilitation in chronic obstructive pulmonary disease. *Egypt J Chest Dis Tuberc* 2015;64(2):359-369.
12. Wageck B, Cox NS, Lee JYT, Romero L, Holland AE. Characteristics of pulmonary rehabilitation programs following an exacerbation of chronic obstructive pulmonary disease: a systematic review. *J Cardiopulm Rehabil Prev* 2021;41(2):78-87.
13. Machado A, Matos Silva P, Afreixo V, Caneiras C, Burtin C, Marques A. Design of pulmonary rehabilitation programs during acute exacerbations of COPD: a systematic review and network meta-analysis. *Eur Respir Rev* 2020;29(158):200039.
14. Bonnevie T, Smondack P, Elkins M, Gouel B, Medrinal C, Combret Y, et al. Advanced telehealth technology improves home-based exercise therapy for people with stable chronic obstructive pulmonary disease: a systematic review. *J Physiother* 2021;67(1):27-40.
15. Hermiz O, Comino E, Marks G, Daffurn K, Wilson S, Harris M. Randomized controlled trial of home-based care of patients with chronic obstructive pulmonary disease. *BMJ* 2002;325(7370):938.
16. Liu X, Li P, Li J, Xiao L, Li N, Lu Y, et al. Home-based prescribed pulmonary exercise in patients with stable chronic obstructive pulmonary disease. *J Vis Exp* 2019(150).
17. Maltais F, Bourbeau J, Shapiro S, Lacasse Y, Perrault H, Baltzan M, et al; Chronic Obstructive Pulmonary Disease Axis of Respiratory Health Network, Fonds de recherche en santé du Québec. Effects of home-based pulmonary rehabilitation in patients with chronic obstructive pulmonary disease: a randomized trial. *Ann Intern Med* 2008;149(12):869-878.
18. Nikolettou D, Man WD, Mustfa N, Moore J, Rafferty G, Grant RL, et al. Evaluation of the effectiveness of a home-based inspiratory muscle training program in patients with chronic obstructive pulmonary disease using multiple inspiratory muscle tests. *Disabil Rehabil* 2016;38(3):250-259.
19. Wootton SL, Hill K, Alison JA, Ng LWC, Jenkins S, Eastwood PR, et al. Effects of ongoing feedback during a 12-month maintenance walking program on daily physical activity in people with COPD. *Lung* 2019;197(3):315-319.
20. Wootton SL, McKeough Z, Ng CLW, Jenkins S, Hill K, Eastwood PR, et al. Effect on health-related quality of life of ongoing feedback during a 12-month maintenance walking program in patients with COPD: a randomized controlled trial. *Respirology* 2018;23(1):60-67.
21. Tsai LL, McNamara RJ, Moddel C, Alison JA, McKenzie DK, McKeough ZJ. Home-based telerehabilitation via real-time videoconferencing improves endurance exercise capacity in patients with COPD: the randomized controlled TeleR Study. *Respirology* 2017;22(4):699-707.
22. Demeyer H, Louvaris Z, Frei A, Rabinovich RA, de Jong C, Gimeno-Santos E, et al. Physical activity is increased by a 12-week semiautomated telecoaching program in patients with COPD: a multi-center randomized controlled trial. *Thorax* 2017;72(5):415-423.
23. Mohammadi F, Jowkar Z, Reza Khankeh H, Fallah Tafti S. Effect of home-based nursing pulmonary rehabilitation on patients with chronic obstructive pulmonary disease: a randomized clinical trial. *Br J Community Nurs* 2013;18(8):398-403.
24. Neves LF, Reis MH, Gonçalves TR. Home- or community-based pulmonary rehabilitation for individuals with chronic obstructive pulmonary disease: a systematic review and meta-analysis. *Cad Saude Publica* 2016;32(6):S0102-0311X2016000602001.
25. Kanervisto M, Paavilainen E, Astedt-Kurki P. Impact of chronic obstructive pulmonary disease on family functioning. *Heart Lung* 2003;32(6):360-367.
26. Kodner DL, Spreeuwenberg C. Integrated care: meaning, logic, applications, and implications—a discussion paper. *Int J Integr Care* 2002;2(4).
27. Wuytack F, Devane D, Stovold E, McDonnell M, Casey M, McDonnell TJ, et al. Comparison of outpatient- and home-based exercise training programs for COPD: a systematic review and meta-analysis. *Respirology* 2018;23(3):272-283.
28. Jolly K, Sidhu MS, Bates E, Majothi S, Sitch A, Bayliss S, et al. Systematic review of the effectiveness of community-based self-management interventions among primary care COPD patients. *NPJ Prim Care Respir Med* 2018;28(1):44.
29. Page MJ, McKenzie JE, Bossuyt PM, Boutron I, Hoffmann TC, Mulrow CD, et al. The PRISMA 2020 statement: an updated guideline for reporting systematic reviews. *BMJ* 2021;372:n71.
30. Ardern CL, Büttner F, Andrade R, Weir A, Ashe MC, Holden S, et al. Implementing the 27 PRISMA 2020 Statement items for systematic reviews in the sport and exercise medicine, musculoskeletal rehabilitation, and sports science fields: the PERSiST (implementing PRISMA in exercise, rehabilitation, sport medicine and sports science) guidance. *Br J Sports Med* 2021.
31. Souto-Miranda S, Rodrigues G, Spruit MA, Marques A. Pulmonary rehabilitation outcomes in individuals with chronic obstructive pulmonary disease: a systematic review. *Ann Phys Rehabil Med* 2021;65(3):101564.
32. Higgins JP, Thomas J, Chandler J, Cumpston M, Li T, Page MJ, et al. *Cochrane handbook for systematic reviews of interventions*. John Wiley & Sons; 2019.
33. Rohatgi A. *WebPlotDigitizer user manual version 4.4*. <https://automeris.io/WebPlotDigitizer/>
34. Higgins JPT, Thomas J, Chandler J, Cumpston M, Li T, Page MJ, et al. How to include multiple groups from one study. In: Higgins JPT, Thomas J, Chandler J, Cumpston M, Li T, Page MJ, Welch V, editors. *Cochrane handbook for systematic reviews of interventions*. John Wiley & Sons; 2019.
35. Higgins JPT., Green S. Principles of meta-analysis. In: Higgins JPT, Green S, editors. *Cochrane handbook for systematic reviews of interventions*. John Wiley & Sons; 2011.
36. Higgins JPT, Altman DG, Gøtzsche PC, Jüni P, Moher D, Oxman AD, et al; Cochrane Statistical Methods Group. The Cochrane Collaboration's tool for assessing risk of bias in randomized trials. *BMJ* 2011;343:d5928.
37. IntHout J, Ioannidis JP, Borm GF. The Hartung-Knapp-Sidik-Jonkman method for random effects meta-analysis is straightforward and considerably outperforms the standard DerSimonian-Laird method. *BMC Med Res Methodol* 2014;14(1):25.
38. Cohen J. *Statistical power analysis for the behavioral sciences*, 2nd edition. Hillsdale, New Jersey: Lawrence Erlbaum Associates Inc; 1988.
39. Higgins JPT, Thomas J, Chandler J, Cumpston M, Li T, Page MJ, et al. Imputing standard deviations for changes from baseline. In: Higgins JPT, Thomas J, Chandler J, Cumpston M, Li T, Page MJ, Welch V, editors. *Cochrane handbook for systematic reviews of interventions*. Wiley & Sons; 2020. In.
40. Higgins JP, Thompson SG, Deeks JJ, Altman DG. Measuring inconsistency in meta-analyses. *BMJ* 2003;327(7414):557-560.
41. Egger M, Smith GD, Schneider M, Minder C. Bias in meta-analysis detected by a simple, graphical test. *BMJ* 1997;315(7109):629-634.
42. Sünnemann H, Brozek J, Guyatt G, Oxman A, editors. *GRADE Handbook: Introduction to GRADE Handbook*. Handbook for grading the quality of evidence and the strength of recommendations using the GRADE approach. GRADE Working Group; updated October 2013.
43. Butler SJ, Desveaux L, Lee AL, Beauchamp MK, Brusco NK, Wang W, et al. Randomized controlled trial of community-based, post-rehabilitation exercise in COPD. *Respir Med* 2020;174:106195.
44. Casey D, Murphy K, Devane D, Cooney A, McCarthy B, Mee L, et al. The effectiveness of a structured education pulmonary rehabilitation program for improving the health status of people with moderate and severe chronic obstructive pulmonary disease in primary care: the PRINCE cluster randomized trial. *Thorax* 2013;68(10):922-928.
45. Effing T, Zielhuis G, Kerstjens H, van der Valk P, van der Palen J. Community-based physiotherapeutic exercise in COPD self-management: a randomized controlled trial. *Respir Med* 2011;105(3):418-426.

46. Hernández C, Alonso A, Garcia-Aymerich J, Serra I, Martí D, Rodríguez-Roisin R, et al; NEXES consortium. Effectiveness of community-based integrated care in frail COPD patients: a randomized controlled trial. *NPJ Prim Care Respir Med* 2015;25(15022):15022.
47. Lou P, Chen P, Zhang P, Yu J, Wang Y, Chen N, et al. A COPD health management program in a community-based primary care setting: a randomized controlled trial. *Respir Care* 2015;60(1):102-112.
48. Man WD, Polkey MI, Donaldson N, Gray BJ, Moxham J. Community pulmonary rehabilitation after hospitalization for acute exacerbations of chronic obstructive pulmonary disease: randomized controlled study. *BMJ* 2004;329(7476):1209.
49. Murphy N, Bell C, Costello RW. Extending a home from hospital care program for COPD exacerbations to include pulmonary rehabilitation. *Respir Med* 2005;99(10):1297-1302.
50. Román M, Larraz C, Gómez A, Ripoll J, Mir I, Miranda EZ, et al. Efficacy of pulmonary rehabilitation in patients with moderate chronic obstructive pulmonary disease: a randomized controlled trial. *BMC Fam Pract* 2013;14:21.
51. van Wetering CR, Hoogendoorn M, Mol SJ, Rutten-van Mólken MP, Schols AM. Short- and long-term efficacy of a community-based COPD management program in less advanced COPD: a randomized controlled trial. *Thorax* 2010;65(1):7-13.
52. Varas AB, Córdoba S, Rodríguez-Andonaegui I, Rueda MR, García-Juez S, Vilaró J. Effectiveness of a community-based exercise training program to increase physical activity level in patients with chronic obstructive pulmonary disease: a randomized controlled trial. *Physiother Res Int* 2018;23(4):e1740.
53. Guyatt G, Oxman AD, Kunz R, Brozek J, Alonso-Coello P, Rind D, et al. Corrigendum to GRADE guidelines 6. Rating the quality of evidence—imprecision. *J Clin Epidemiol* 2011;64:1283-1293. *J Clin Epidemiol* 2021;137:265.
54. Guyatt GH, Oxman AD, Kunz R, Brozek J, Alonso-Coello P, Rind D, et al. GRADE guidelines 6. Rating the quality of evidence—imprecision. *J Clin Epidemiol* 2011;64(12):1283-1293.
55. Tachkov K, Kamusheva M, Pencheva V, Mitov K. Evaluation of the economic and social burden of chronic obstructive pulmonary disease (COPD). *Biotechnol Bioelectron Equip* 2017;31(4):1-861.
56. Kirsch F, Schramm A, Schwarzkopf L, Lutter JI, Szentes B, Huber M, et al. Direct and indirect costs of COPD progression and its comorbidities in a structured disease management program: results from the LQ-DMP study. *Respir Res* 2019;20(1):215.
57. Wacker ME, Jörres RA, Schulz H, Heinrich J, Karrasch S, Karch A, et al; COSYCONET-Consortium. Direct and indirect costs of COPD and its comorbidities: results from the German COSYCONET study. *Respir Med* 2016;111:39-46.
58. Chen W, FitzGerald JM, Sin DD, Sadatsafavi M. Excess economic burden of comorbidities in COPD: a 15-year population-based study. *Eur Respir J* 2017;50(1):1700393.
59. Yu B, Tong S, Wu Y, Abdelrahim MEA, Cao M. Effects of resistance training on exercise ability in chronic obstructive pulmonary disease subjects: a systematic review and meta-analysis. *Int J Clin Pract* 2021;75(9):e14373.
60. Taylor D, Jenkins AR, Parrott K, Benham A, Targett S, Jones AW. Efficacy of unsupervised exercise in adults with obstructive lung disease: a systematic review and meta-analysis. *Thorax* 2021;76(6):591-600.
61. Zhang F, Zhong Y, Qin Z, Li X, Wang W. Effect of muscle training on dyspnea in patients with chronic obstructive pulmonary disease: a meta-analysis of randomized controlled trials. *Medicine (Baltimore)* 2021;100(9):e24930.
62. Imamura S, Inagaki T, Terada J, Nagashima K, Katsura H, Tatsumi K. Long-term efficacy of pulmonary rehabilitation with home-based or low-frequency maintenance programs in patients with chronic obstructive pulmonary disease: a meta-analysis. *Ann Palliat Med* 2020;9(5):2606-2615.
63. de Lima FF, Cavalheri V, Silva BSA, Grigoletto I, Uzeloto JS, Ramos D, et al. Elastic resistance training produces benefits similar to conventional resistance training in people with chronic obstructive pulmonary disease: systematic review and meta-analysis. *Phys Ther* 2020;100(11):1891-1905.
64. Higashimoto Y, Ando M, Sano A, Saeki S, Nishikawa Y, Fukuda K, et al. Effect of pulmonary rehabilitation programs including lower-limb endurance training on dyspnea in stable COPD: a systematic review and meta-analysis. *Respir Investig* 2020;58(5):355-366.
65. Dobler CC, Morrow AS, Farah MH, Beuschel B, Majzoub AM, Wilson ME, et al. Nonpharmacologic therapies in patients with exacerbation of chronic obstructive pulmonary disease: a systematic review with meta-analysis. *Mayo Clin Proc* 2020;95(6):1169-1183.
66. Paneroni M, Vitacca M, Venturelli M, Simonelli C, Bertacchini L, Scavini S, et al. The impact of exercise training on fatigue in patients with chronic obstructive pulmonary disease: a systematic review and meta-analysis. *Pulmonology* 2020;26(5):304-313.
67. Hindelang M, Kirsch F, Leidl R. Effectiveness of nonpharmacological COPD management on health-related quality of life - a systematic review. *Expert Rev Pharmacoecon Outcomes Res* 2020;20(1):79-91.
68. Kruapanich C, Tantisuwat A, Thaveerathitham P, Lertmaharit S, Ubolnuar N, Mathiyakom W. Effects of different modes of upper-limb training in individuals with chronic obstructive pulmonary disease: a systematic review and meta-analysis. *Ann Rehabil Med* 2019;43(5):592-614.
69. Wang YQ, Liu X, Ma RC, Yin YY, Yang Z, Cao HP, et al. Active video games as an adjunct to pulmonary rehabilitation of patients with chronic obstructive pulmonary disease: a systematic review and meta-analysis. *Am J Phys Med Rehabil* 2020;99(5):372-380.
70. Li N, Li P, Lu Y, Wang Z, Li J, Liu X, et al. Effects of resistance training on exercise capacity in elderly patients with chronic obstructive pulmonary disease: a meta-analysis and systematic review. *Aging Clin Exp Res* 2020;32(10):1911-1922.
71. Li W, Pu Y, Meng A, Zhi X, Xu G. Effectiveness of pulmonary rehabilitation in elderly patients with COPD: a systematic review and meta-analysis of randomized controlled trials. *Int J Nurs Pract* 2019;25(5):e12745.
72. Gordon CS, Waller JW, Cook RM, Cavalera SL, Lim WT, Osadnik CR. Effect of pulmonary rehabilitation on symptoms of anxiety and depression in COPD: a systematic review and meta-analysis. *Chest* 2019;156(1):80-91.
73. Hong Y, Lee SH. Effectiveness of telemonitoring by patient severity and intervention type in chronic obstructive pulmonary disease patients: a systematic review and meta-analysis. *Int J Nurs Stud* 2019;92:1-15.
74. Lee EN, Kim MJ. Meta-analysis of the effect of a pulmonary rehabilitation program on respiratory muscle strength in patients with chronic obstructive pulmonary disease. *Asian Nurs Res (Korean Soc Nurs Sci)* 2019;13(1):1-10.
75. Rysø CK, Godtfredsen NS, Kofod LM, Lavesen M, Mogensen L, Tobberup R, et al. Lower mortality after early supervised pulmonary rehabilitation following COPD exacerbations: a systematic review and meta-analysis. *BMC Pulm Med* 2018;18(1):154.
76. Desveaux L, Harrison SL, Gagnon JF, Goldstein RS, Brooks D, Pepin V. Effects of exercise training on cognition in chronic obstructive pulmonary disease: a systematic review. *Respir Med* 2018;139:110-116.
77. Jenkins AR, Gowler H, Curtis F, Holden NS, Bridle C, Jones AW. Efficacy of supervised maintenance exercise following pulmonary rehabilitation on health care use: a systematic review and meta-analysis. *COPD* 2018;Volume 13(13):257-273.
78. Deng N, Gu T, Zhao Q, Zhang X, Zhao F, He H. Effects of telephone support on exercise capacity and quality of life in patients with chronic obstructive pulmonary disease: a meta-analysis. *Psychol Health Med* 2018;23(8):917-933.
79. Torres-Sánchez I, Cruz-Ramírez R, Cabrera-Martos I, Díaz-Peagrina A, Valenza MC. Results of physiotherapy treatments in exacerbations

- of chronic obstructive pulmonary disease: a systematic review. *Physiother Can* 2017;69(2):122-132.
80. Paneroni M, Simonelli C, Vitacca M, Ambrosino N. Aerobic exercise training in very severe chronic obstructive pulmonary disease: a systematic review and meta-analysis. *Am J Phys Med Rehabil* 2017;96(8):541-548.
 81. Ubolnuar N, Tantisuwat A, Thaveeratitham P, Lertmaharit S, Kruapanich C, Mathiyakom W. Effects of breathing exercises in patients with chronic obstructive pulmonary disease: systematic review and meta-analysis. *Ann Rehabil Med* 2019;43(4):509-523.
 82. Beaumont M, Forget P, Couturaud F, Reychler G. Effects of inspiratory muscle training in COPD patients: a systematic review and meta-analysis. *Clin Respir J* 2018;12(7):2178-2188.
 83. Mayer AF, Karloh M, Dos Santos K, de Araujo CLP, Gulart AA. Effects of acute use of pursed-lips breathing during exercise in patients with COPD: a systematic review and meta-analysis. *Physiotherapy* 2018;104(1):9-17.
 84. Njoku CM, Alqahtani JS, Wimmer BC, Peterson GM, Kinsman L, Hurst JR, et al. Risk factors and associated outcomes of hospital readmission in COPD: a systematic review. *Respir Med* 2020;173:105988.
 85. Volpato E, Toniolo S, Pagnini F, Banfi P. The relationship between anxiety, depression, and treatment adherence in chronic obstructive pulmonary disease: a systematic review. *Int J Chron Obstruct Pulmon Dis* 2021;16(16):2001-2021.
 86. Alsubheen SA, Wshah A, Goldstein R, Brooks D. Psychometric properties of patient-reported outcome measures assessing self-efficacy in patients with chronic obstructive pulmonary disease (COPD): a systematic review. *COPD* 2021;18(2):254-263.
 87. Vilarinho R, Caneiras C, Montes AM. Measurement properties of step tests for exercise capacity in COPD: a systematic review. *Clin Rehabil* 2021;35(4):578-588.
 88. Oliveira AL, Marques AS. Outcome measures used in pulmonary rehabilitation in patients with acute exacerbation of chronic obstructive pulmonary disease: a systematic review. *Phys Ther* 2018;98(3):191-204.
 89. Johnston BC, Patrick DL, Thorlund K, Busse JW, da Costa BR, Schünemann HJ, et al. Patient-reported outcomes in meta-analyses-part 2: methods for improving interpretability for decision makers. *Health Qual Life Outcomes* 2013;11:211.